

A Catchment Based Approach to River Conservation

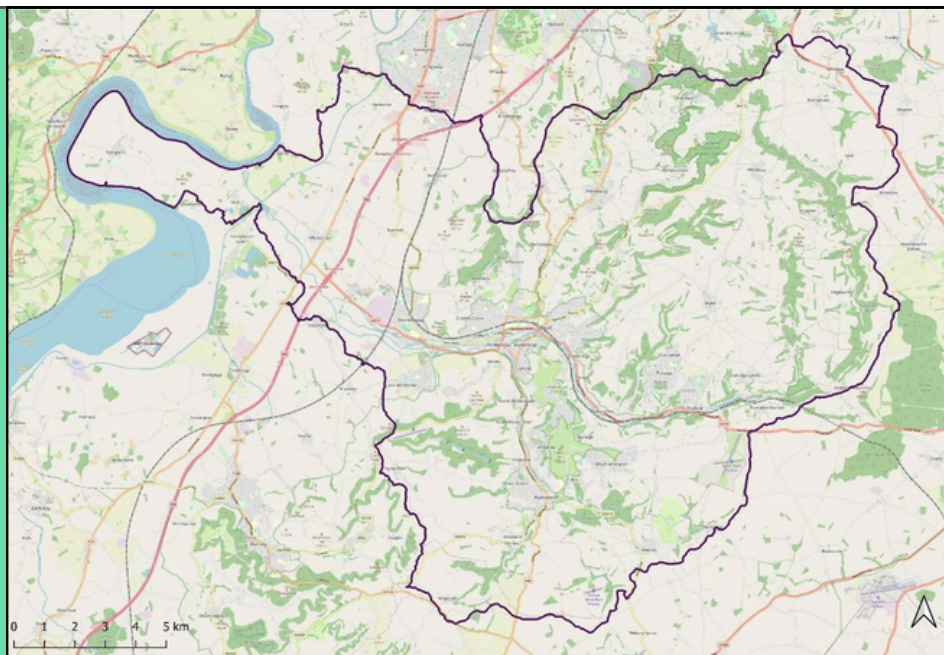
The Severn Vale Catchment Partnership; a group of conservation organisations, local authorities, statutory bodies, recreational groups, and water companies working together to protect and enhance the Severn Vale for wildlife and people.

Through a series of ambitious flagship projects, we are aiming to restore ecosystem functionality at a catchment level. The Wilder Frome is the first of these, focusing on the river Frome, Gloucestershire.

Through consultation with a wide range of stakeholders we developed a 2030 Strategic Action Plan outlining our environmental priorities and objectives. At the heart of this is the importance of increasing climate resilience, working with the latest data and evidence, and implementing Nature Based Solutions across the catchment.

A vision for the Frome:

A river bursting with life from its source in the Cotswolds to the Severn Estuary. Eels, salmon, and other migratory fish returning to breed in clear limestone streams. Wetlands, floodplains and woodlands full of plants and trees sequestering carbon. Wildlife-rich farmland, towns, and villages where flooding causes minimal human suffering, and droughts rarely make the river run dry.



Our Environmental Priorities



Kai'a Bellamy Fromebridge Mill fish pass

Making it easier for fish to migrate and move

Implementing fish passage solutions, barrier removals, or easements, and increasing white-clawed crayfish habitat and populations.

Making space for wildlife

Re-naturalising the channel with woody debris, restoring wetland mosaic habitat, reconnecting the floodplain, and investigating beaver introductions.



Kai'a Bellamy White Clawed Crayfish



Kai'a Bellamy Scrapes for waterbirds

Working in the wider landscape

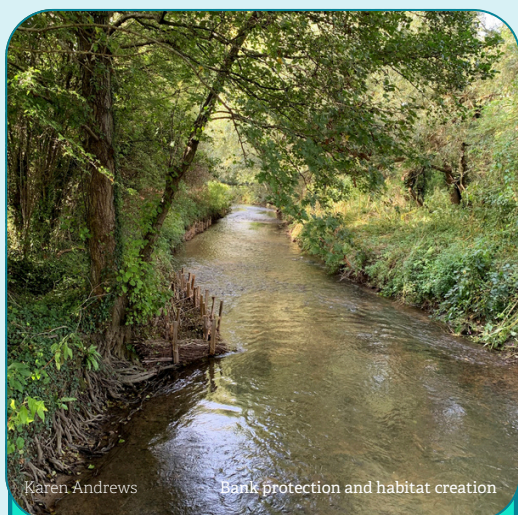
Creating farm case studies to investigate wildlife friendly farming options, and working with landowners to help them select ELMs options and improve the water environment.

Cleaning up our rivers

Working with farmers, water companies, and local authorities to reduce sediment, nutrient, sewage, and highway input, running misconnection awareness campaigns.



Kai'a Bellamy Litter pick



Karen Andrews Bank protection and habitat creation

Restoring healthy flows

Doubling the number of natural flood and drought measures, seeking to identify the causes of zero flows, and offering the Frome as a demonstrator for NFM.

Taking action on Invasive Non-Native Species

Controlling Himalayan balsam, giant hogweed, and American mink, and running a biosecurity campaign focused on raising awareness.



Gloucestershire Wildlife Trust Himalayan Balsam



Kai'a Bellamy Riverfly survey

Monitoring and Data

Improving water environment and invasive species monitoring, supporting statutory monitoring, and establishing a citizen science monitoring hub for the river Frome.

Community Engagement and Partnership

Working with local authorities and communities to run river cleaning events and increase understanding of the catchment through an annual stakeholder event.



Peter Savage Riverfly survey