

FOLLOW US ON FACEBOOK

November 2023

FREE
Digitally!
60p

Eastcombe, Bussage & Brownshill Newsletter

Welcome to the November issue of the newsletter. To receive a digital copy FREE every month, contact eastcombebambnews@gmail.com. You can also read the newsletter online at www.chalford-glos.gov.uk/Newsletters_34865.aspx & www.bisley-with-lypiatt.gov.uk/eastcombe/.

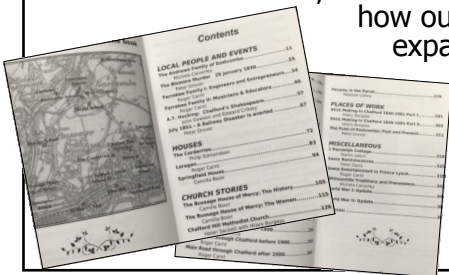
Printed copies 60p from **Eastcombe Stores & Post Office, Frith Community Café & Chalford Parish Centre**. The newsletter is also available to customers of **Head First & The Lamb Inn**.

Please send items for the December issue to eastcombenewsletter@btinternet.com by **20th November**.

HILLTOP HISTORIES

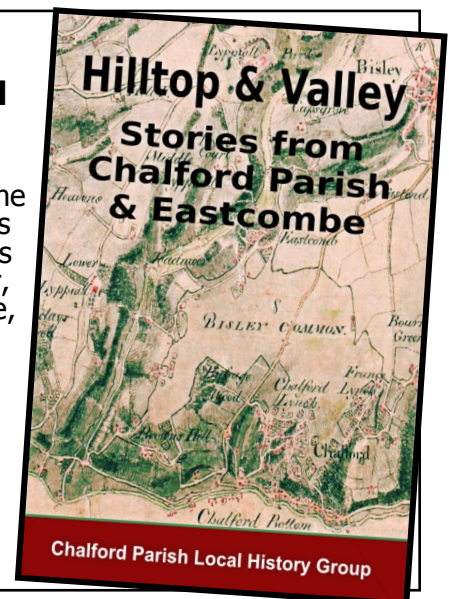
Chalford Local History Group has published a new book, filled with tales of local history - and this time it includes Eastcombe!

The 376 page '*Hilltop & Valley: Stories of Chalford Parish and Eastcombe*' is the sequel to the successful '*Chalford Parish in 42 Stories*', published in 2018. As previously, the book, which is fully illustrated, is the collected work of authors from across the hilltop villages. Within the 37 chapters are stories of murder, schools and churches, The Bussage House of Mercy, St Elizabeth's Orphanage, how our hilltop villages were created from the vast expanses of Bisley Common, and much more.



Priced at £10 each, copies of the book are available from Eastcombe Stores, Chalford Parish Centre (in Gerald's Way, near Tesco Express) and Chalford Village Shop.

The perfect Christmas present for local history lovers!



PLEASE!
Check your bonfire
for hedgehogs.

ONE STEP AT A TIME...



The 'Death Slide' path runs from Wells Road (below The Lamb Inn) Eastcombe, to Bismore in the valley. Teenagers from Bismore would slide down, giving the path its nickname

(although, happily no deaths are recorded!) But if you have ever been up (or worse, down) the path, you'll know that your knees complain, with the steps steep and the slope slippery.

September saw a joint venture between Eastcombe and Chalford Footpath Groups to make the path more walkable. 9 new steps have now been installed on the lower stretch, with more planned, plus another handrail.

If you would like to join Eastcombe Footpath Group, we welcome people who enjoy the outdoors and a challenge. We meet on a Wednesday or Friday morning, while Chalford Footpath Group meet on Thursday mornings.

Contact Sue Wise:

suzieleetewise@gmail.com

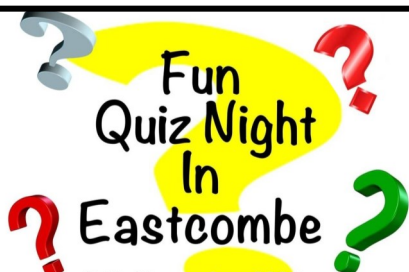


EASTCOMBE REMEMBERS

Eastcombe's annual Act of Remembrance takes place on **Saturday 11th November** (the day *before* Remembrance Sunday), **starting at 10.45am at the war memorial** in Dr Crouch's Road.

All are welcome to join in this short and simple service, which will include the reading of names of all those from the village who perished in war, followed by the traditional two minutes silence.

Please support your village Act of Remembrance.



25th November 2023
Eastcombe Village Hall
7pm

£7 Per Person for
teams up to 6
including a

Ploughman's Buffet
(Bring your own drinks)

**TICKETS AVAILABLE AT
EASTCOMBE STORES**

BISLEY-WITH-LYPIATT PARISH COUNCIL NEWS: NOVEMBER 2023

<https://bisley-with-lypiatt.gov.uk/>

Parish Clerk: As reported last month, our present Clerk, Arlene Deane, is moving on and returning to Cheltenham. Vikki Wood has decided not to accept the role, meaning that we are once again looking for a new Clerk. Hours are flexible with a minimum of 23hrs/wk. If you would like to get involved with the administration of the Parish Council, please email admin@bisley-with-lypiatt.gov.uk. The Parish Council landline (01452 771089) is currently inoperative; if you wish to phone the Council, please contact Arlene on 07739 719079.

Remembrance Service: Revd Sue Murray will conduct a short Remembrance Service at the War Memorial in the burial ground, Dr Crouch's Road, Eastcombe on **Saturday 11th November at 10.45am**.

Land at Fourways: The woodland opposite Fourways Garage was sold last year, when the Parish Council successfully applied for a 6 month temporary Tree Protection Order. This order has now expired and because the owner objected to the TPO, a decision on whether it should be made permanent was taken by SDC at their Decision Control Committee meeting on the 17th October. It was decided that the TPO should be made permanent, thus this area of woodland is now fully protected against any further tree felling or development.

Playground Upgrade: The Eastcombe Ward Councillors have decided that this project will be split into several phases to make it economically feasible. The 1st phase will concentrate on providing a complete play experience for younger children (aged 3 to 7). Exterior Architecture are re-vamping the display board to reflect this and it will be available to view shortly. We have also engaged with the major contractor conducting the work at Thomas Keble school with a view to them providing assistance during this phase of the project.

Dr Crouch's Road Sign: As you may have noticed, the Dr Crouch's Road sign has disappeared. It is believed that this was initially damaged in a vehicle collision and subsequently stolen. This has been reported to SDC and hopefully a replacement sign will be installed within the next few weeks.

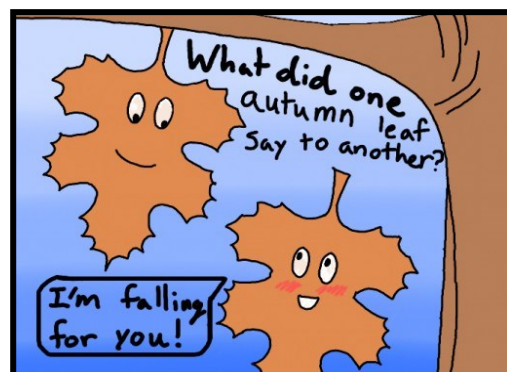
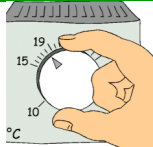
Potential Community Land Trust: Bisley-with-Lypiatt Parish Council is considering creating a Community Land Trust (CLT) for local people: there is a lack of small homes for older residents wanting to downsize and for young people. Others also have housing needs. Are you one of them? The CLT would aim to build a number of genuinely affordable and sustainable homes within the parish, affordable in perpetuity for local people, responding directly to the needs of the community. This approach is a proven way for communities to come together to meet their own housing needs. Visit www.communityledhomes.org.uk for more information. We invite anyone interested in joining the CLT at this very early stage to help bring this exciting project forward: please contact admin@bisley-with-lypiatt.gov.uk

Next Meeting: Bisley Village Hall, Wednesday November 1st at 7.30pm. All are welcome to attend.

GO GREENER:
DON'T SET THE THERMOSTAT TOO HIGH!

As temperatures fall, your heating will start to come on. Turning the thermostat down by just 1 degree saves energy & could cut your bill by 4-5% - around £145 a year!

Bisley, Eastcombe & Oakridge
Climate Action Network



CHALCAN: WORKING IN THE COMMUNITY



ChalCAN Biodiversity Action: In September we planted 200 wildflower plants along the path behind Tesco. Recently, volunteers cleared cut grass from Abnash and parish banks and sowed more wildflower seeds. With grants from the Tree Council and Gloucestershire Ash Dieback Fund, we will be planting trees and hedges, including a new hedge for Bussage School.

Chalford Composting Group Survey (supported by ChalCAN) There were 87 responses, spread across the parish. Many people make an average 1.5 trips to the tip each year,

41% of respondents have bonfires and most buy in some compost. There was strong (94%) support for a local scheme. Middle Hill allotments was the most popular location. Interested people are invited to a planning meeting (with wine!) at 8pm on Monday 13th November in Chalford Valley Village Hall on the A419. Please email Karen Phimister at kjpmail66@gmail.com if you would like more information.

ChalCAN Transport purchased a bike rack for France Lynch Church Rooms, kindly installed by the Parish Footpath Group. If you're going to an event there, you can now securely lock your bike onto the rack at the rear. Plans are also afoot to buy a rack for Frith Youth Centre.

Our **community walks** continue: **Saturday 18th November and Saturday 9th December**, meeting at Chalford Sports and Social Club at 10am, where a hot drink will be available after the walk!

ChalCAN Energy have limited funds to support local residents who find it hard to pay for materials to insulate their homes. Do get in touch if you think we might be able to help. They will also be contributing to insulation work at the Frith Youth Centre.

Contact us to get involved or to find out more: info@chalcan.org.uk



CHALFORD PARISH COUNCIL NEWS: NOVEMBER 2023

Chalford Parish Centre, 50 Gerald's Way, Chalford, Stroud, GL6 8FJ;
01453 887204; info@chalford-glos.gov.uk www.chalford-glos.gov.uk.



Two New Councillors! We are delighted to welcome Peter Funnell (Bussage Ward) and Chris Gardiner (Hill Ward), both co-opted at the Full Council meeting on 5 October. Both have lived locally for a long time. Passionate about the environment, Peter is eager to assist the Council with land maintenance. Chris lives at Middle Hill Farm and is Managing Director of Gardiners Construction. He has lots of experience with community groups and activities and is keen to continue this as a Parish Councillor.

Play Rangers: Thursday 2nd November, 10am to 4pm, at The Old Common, Bussage, with a spooky theme and a variety of free activities. Under 7's are also welcome but must be accompanied by a parent or carer.

Friday Lunch Club: Frith Youth Centre, every Friday, 12-2pm: Launched a year ago, many residents attend regularly & enjoy a sociable free lunch of home-made soup and a roll, cheese & biscuits, cake and tea or coffee! We have a fantastic group of volunteers but we need more! If you can help, please get in touch.

Chalfest: Tickets for 2024 are now available www.ticketfairy.com/event/chalfest-2024-19jul2024/

Food Table: Thank you to all residents who have contributed to the table, which is just inside the foyer at the Parish Centre. Thanks also to Tesco Express for donations and Chalford Hill School for donating their Harvest Festival collection. Our Chair, Cllr Trinder, attended the school's harvest assembly to express our thanks and to explain how valuable the food bank has become. It is heart-warming to see the community working together—donations really do make a difference.

Remembrance Day: Councillor Samaroo will lay a wreath on behalf of the Parish Council on Sunday 12th November at Christchurch, Chalford.

Frith Wood Update: We are still awaiting planning permission to make the trees safe following squirrel damage. In severe weather conditions, you are advised not to enter the wood or to use the path by the side.

Openreach: Reinstallation of cables following their theft in August is now complete, and the Parish Centre and residents have landlines again. Openreach assure us that extra security measures are now in place.

Footpath Volunteers: The barriers at this corner of Bussage playing field were green when the photo was taken, but, when you read this, depending on the weather, your Footpath Volunteers hope to have painted them yellow - the recommended colour for visually impaired people to see at a distance. They have also widened the gaps in the walls for mobility scooters and wheelchairs, improved muddy surfaces, and made barriers safer (the volunteers, right, are standing behind a vertical bar barrier, installed to replace the hoop barrier, which children could run underneath).

Please contact us (details above) if you have any questions, concerns or suggestions.



BUSSAGE PRIMARY SCHOOL

The PTA-run **Bussage Bear Hunt** raised an outstanding £5,622.35. Each bear represented a letter of the alphabet, and the winning bear was H for Halloween, created by the Hill family.

World Mental Health Day: Children from Key Stage 2 came together to participate in a peer massage session, supporting 'Connect', part of the NHS' 5 ways to well-being. Children practised breathing techniques, positive touch and mindfulness colouring.

The Harvest Service: Led by our team of Values Ambassadors and attended by parents, carers and relatives, children produced eye-catching artwork of fruit and vegetables in the colours of the rainbow and enjoyed singing worship songs about thankfulness. Many items were donated to Stroud Food Bank.



Open The Book is back and we were delighted to welcome the team to morning worship. The children enjoyed seeing the bible story come alive.

Years 3 & 4 recently visited **The National Waterways Museum and Gloucester Docks** as part of their theme 'H2O'. They took an exciting trip on the *Queen Boadicea*, explored the history of the waterways and toured the docks, attending a crane building workshop on the floating classroom. The children showed exemplary behaviour and had a wonderful time.

Our first Open Day was very well attended. Two more are scheduled for **November 15th** and **December 5th**, beginning at 9:30am. **Please book by calling us on 01453 883 205.**



EASTCOMBE PRIMARY SCHOOL



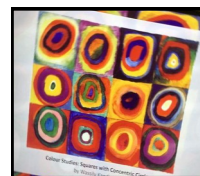
The world's first public museum, the Ashmolean in Oxford, was founded by Elias Ashmole (1617–92) in 1683, to advance knowledge of the natural world as necessary to human life and good health. In a recent visit, **children from Eastcombe's Owl Class** had first hand experience of being Ancient Egyptian Detectives for the day, handling artefacts over 3000 years old(!), taking part

in a thrilling treasure hunt and a workshop. Their teacher, Mrs. Monk, said that the children impressed the workshop leader with their knowledge and learnt lots more about the natural world, all part of Eastcombe Primary School's Enrichment Programme.

Art in Squirrel Class: children continued their study of spirals by exploring the work of Russian painter and art theorist Wassily Kandinsky, who pioneered the concept of 'geometric abstraction' - representing ideas not things, focusing on shapes and colours. Kandinsky believed this enabled him to paint honestly about his feelings. Reflecting on how different colours made them feel, the children were able to create their own concentric circles!

Eastcombe Primary is currently working on plans for a **'wrap around' care offer**— further details coming soon!

For more information, call 01452 770227, visit www.eastcombe.gloucs.sch.uk/ or email admin@eastcombe.gloucs.sch.uk



Eastcombe Baptist Church

A service is held every Sunday morning at 10:30am at the church in Dr Crouch's Road, Eastcombe.

DISTRICT COUNCILLOR'S NOTES

Council House Retrofits: Stroud is retrofitting – insulating and installing heat pumps – in all its 5000 council-owned houses in the district, with those in Eastcombe and Bisley due to be done in the next phase. Tenants will be contacted individually to arrange work dates.

RSPCA Awards for SDC: SDC's Animal Welfare Team has won 4 PawPrints awards from the RSPCA, including Platinum for its stray dog service, and, for the first time, Bronze for Housing Services for 'a clear and positive policy which makes a big difference to the lives of tenants who are pet owners, and their furry friends'. The Council works with a number of animal charities in the area including Teckels Animal Sanctuary and Cotswold Dogs and Cats Home.

Tricorn House in Cainscross has stood empty for many years, despite extensive efforts by the District Council to encourage the owners to bring it back into use (it has never been owned by the council.) Ownership changed at the end of 2022, and it is now being converted into 44 one-bedroom flats. More [information](http://www.stroud.gov.uk/) on www.stroud.gov.uk/.

Love to Ride: SDC staff and councillors got on their bikes for Cycle September and pedalled their way to better health, saving money and helping to protect the environment. We finished a creditable 20th position in England for Government and Public Services with between 200 and 499 staff, and 2nd in that category in Gloucestershire (behind Cheltenham Borough Council). The SDC team clocked up 1,427 miles, saving 387lbs of CO2 by swapping cars for handlebars. Your councillor is second from right (helmet removed for photo).



Eastcombe Woodland Protected: The TPO on woodland near Fourways has been made permanent (see Bisley-with-Lypiatt Parish Council news on [Page 2](#)). I was pleased to vote with the committee to put this protection in place.

Job Vacancies: Current vacancies at the Council include openings for an electrician and a Digital Developer (18 month contract). See www.stroud.gov.uk/.

As always, please contact me on any District Council issues: Martin Brown, Green Party, 01452 770878 cllr.martin.brown@stroud.gov.uk

St Michael's & All Angels, Bussage

Visitors are always welcome. Our services this month are:

- **Nov 12th** - Holy Communion at 9am [*Please note earlier start than usual!!*]
- **Nov 19th** - Holy Communion at 9.30am
- **Nov 19th** - Hilltop Cafe Church, Eastcombe Village Hall, 2.30pm (see poster)

On other Sundays there are services in different parts of the Benefice. For details visit www.bisleybenefice.org.uk or sign up to our mailing list: pewslipsbisley@hotmail.com.

For weddings, funerals & baptisms, contact Revd Sue Murray: vicar@bisleybenefice.org.uk



HILLTOP CAFE CHURCH
Christian Worship for those of
all faiths and none.

Sunday 19th November

2.30PM

EASTCOMBE VILLAGE HALL

BROUGHT TO YOU FROM THE PARISH OF BUSSAGE & EASTCOMBE

BUBBLES AND CAKE

Eastcombe WI would like to thank everyone who supported their Bubbles and Cake event by donating items or attending.



EASTCOMBE WI:

Our President welcomed members to the meeting, and our speaker, Ian Cuskie, was introduced. He talked about 'SS Great Britain - From Launch to "Re-Launch"', taking us through her design and building by Brunel, her voyages to America and Australia and her wrecking off Cape Horn. Sold to the Falklands and abandoned, she was eventually returned to Bristol and restored. Now one of the greatest attractions in the world, she sits in the middle of a large maritime estate, which also boasts a Brunel museum. This fascinating talk, with magnificent photographs, was warmly applauded and Ian was thanked by Glenys.

Our business section included the total raised at our Bubbles and Cake event, in memory of Jill Mauler. £1,500 will be sent to Sue Ryder Hospice, Leckhampton. Thanks to all who attended.

Our November meeting is the AGM, followed by the auction of gifts. Arrangements for our Christmas event were announced, and events for the Gloucestershire Federation were posted.

Eastcombe WI are a friendly group of women who enjoy friendships, good speakers and outings. Most meetings are open to visitors for a small fee. New members are welcome.

Meetings take place on the 3rd Tuesday of the month at 7.15pm at Eastcombe Village Hall, and usually include some form of entertainment. Our next open meeting is in January.

For more information please contact the Secretary, Glenys Sharpe, on 01453 886298.



Saturday 16th September marked a special day for Chalford Band, as they headed to Cheltenham to compete in the finals of the National Brass Band Championships of Great Britain.



This marked the culmination of a successful few months, with the band achieving 2nd place at the LBBA First section competition in Loughborough in November 2022 - well worth the 165-mile round trip - and an outstanding performance at the West of England First section in Torquay in March 2023, where they secured 1st place (photo left), securing them a S.

The finals saw a total 79 bands competing across 4 sections, with well over 2000 performers playing over 2 days. Thankfully for Chalford, it was not a long trip, something which could not be said for the majority of the competitors, with some bands travelling from much further afield, notably a band from York (York Railway Institute), Rochdale (Wardle Anderson) and even Ebbw Valley, South Wales. In the First section, Chalford were taking on 19 other brass bands from around the country, all who had earned the right to represent their region, and all competing for the national title.

The band put in a performance to be proud of, playing the set piece St James' *A New Beginning*, 'by Philip Harper, a tough piece that, according to the judges, *'had elements that would be tricky to grasp'*. Although they were not able to replicate the success of Torquay or Loughborough, finishing 15th out of 20 fabulous bands (some of which would be moving up to the Championship section next year) it was still a great result. Steve Tubb, musical director, told us:



'In what has been a wonderful 12 months for the band, the qualifying for the National finals as West of England champions for the first time in the band's history, was the icing on the cake. The whole wonderful experience became a celebration of what had been achieved and the band & I were extremely proud to represent the village of Chalford in this auspicious event. Whilst the result wasn't quite as hoped, we were very proud of our performance of a wonderful test piece.

We look forward to seeing some of you as we prepare for our Christmas festivities. Thank you all for your support.'

Local author Marilyn Brason has published her 2nd book, *Crossing the Rift*.

Following the success of her 1st book, *The Bamboo Bracelet* 3 years ago, Marilyn continues the true story of her family of unusual and intrepid women. Whilst *The Bamboo Bracelet* followed Marilyn's mother, Ronny, through Japanese Prisoner of War camps in the Philippines where she gave birth to and raised her daughter, this new book introduces us to Marilyn's grandmother, Elf.

In *Crossing the Rift*, Elf, aged 64, is helping the WWII effort in South Africa when she feels impelled to pack her worldly goods and travel from Cape Town to Palestine, on her own, to reunite with her unsuspecting husband, a journey of over 6,814 visually stunning but severely challenging miles.

Based on Elf's actual journals, Marilyn explores her extraordinary route and, in parallel, Elf's former Edwardian life spent around Stroud and Painswick. Elf's Cotswold background is a fascinating glimpse into the trials of local life in a bygone era, contrasting with her African adventure. Original local photographs, newspaper cuttings and African maps illustrate this attractive book, which is available from all local book shops.



presents

Director: Olivia Newman

Starring: Harris Dickinson, Daisy Edgar-Jones, Taylor Smith

From a best-selling novel, the story of Kya, an abandoned girl who raises herself to adulthood in the dangerous marshlands of North Carolina. A beautiful, touching and powerful movie

Venue: Eastcombe Village Hall

Date: Saturday 18th November

**Time: Doors open 7pm,
Film starts 7.30pm**

Admission: £4 per person
Ice Creams £2 each

Organised by Bisley-with-Lypiatt Twinning Association



Curry + Quiz Night
Saturday 11th November
Oakridge Village Hall
Start 7pm

Licensed Cash Bar

Tickets £12 Children £6

Tickets available from:

John Hughes: mail@jmhughes.plus.com
07810 123511

Paul Hunt: paul@selsleyfoods.com
07814 621700

Muriel Brooks: mbrooks@niceworkuk.co.uk
01452 770346





JUNO

Wednesday 29th November
Chalford Hill Primary School

Doors 7.15pm, Film starts 8pm
Tickets £4 on arrival

Enjoy social time with wine, beer, ice cream, popcorn, cosy blankets, candlelight and our monthly film screening.

When precocious teen Juno MacGuff gets pregnant, she chooses a failed rock star and his wife to adopt her unborn child.

Complications occur when Mark, the prospective father, begins viewing Juno as more than just the mother of his future child, putting both his marriage and the adoption in jeopardy.

Proceeds to Chalford Hill Primary School PTA

Visit us on [Facebook](#) or see posters.

HILLTOP GARDENING CLUB HAPPENINGS...

www.hilltopgardeningclub.org.uk

Just loving this Indian summer! Those late flowering Helianthus and Heleniums are so uplifting!

Our October meeting required a last minute change of plan; our speaker on China had been for an eye check up on the morning of our talk and suddenly found he needed laser treatment and couldn't drive. Not deterred, Jane Randall, our Chairperson, came up with questions from an RHS quiz, and teams settled to good discussions, leading to many getting the answers correct. Well done, and thanks Jane!

NEXT MEETING: AT EASTCOMBE SCOUT HUT:
Tuesday 7 November, starting at 2pm.

Please note the changed venue and slight time change for the indoor winter months of November and December 2023, and February 2024. Our speaker is Dr Mike Jones (he spoke to us last year on 'Mistletoe - Fact Myth and Legend') who will tell us about 'David Douglas - the Greatest Plant Hunter of all Time.'

Members free. Non members welcome: £3 admission.

Jenny Exley (one of the Programme Secretaries)

JAZZ UP YOUR GARDEN FOR AUTUMN!

If you think your garden is lacking a bit of 'Autumn Glory,' now is a great time to plan for a fantastic show next year. Autumn is the best time for planting as the soil is moist and the ground still warm, so plants can get their roots down while they don't have to support leaves. Here a few suggestions suited to our conditions:

- **Spindle tree** (*Euonymus europaeus*): a small shrub/tree with red/orange leaves and stunning bright pink and orange fruits loved by the birds (right).
- **Paper Bark Maple** (*Acer griseum*) – a small tree with fantastic autumn colour and copper coloured papery bark, which provides a great winter focal point.
- **Dogwoods** such as *Cornus alba* and *Cornus sanguinea* have lovely autumn colour, followed by brightly coloured stems for winter. They are very easy to grow and cope with drought - and waterlogging!
- **Hesperantha**: a perennial, gladiolus-like flower in white or pink from September to December.
- **Panicum grasses**, e.g. 'Shenandoah,' with beautiful dark red & green leaves & arching seed heads.
- **Ivy-leaved cyclamen** (*Cyclamen hederifolium*) – dainty pink or white flowers in autumn, great for planting in drifts under trees & on banks.



The Eastcombe Gardener

KEEP IT LOCAL!



Chalford Mobile Foot Clinic

Registered Foot Health Practitioner

DBS checked, Fully insured



Call Katie: 07880681921

- Hard to cut nails
- Dry cracked skin
- Corn and callus
- Partial nail removal
- Fungal and athletes treatment
- Verruca
- Luxury heat treatment and gentle massage

In the comfort of your own home

Would you like **your** business to have a free mention one month?

Get in touch with the newsletter!

THE GREEN SHOP

by Roger Budgeon

It all began with Holbrook Garage, the first service station in the UK to offer lead free petrol. Today, we are a family of companies with a common ethos and a commitment to sustainable products and services, now and into the future.

Back in the early days, to encourage everyone to think about the environment and a sustainable future, I coined a phrase "If you want to change the world, you need to start from where you are." We started to sell green products in the garage shop and to make our business more sustainable. Now we have companies that do solar (Greenshop Solar), rainwater harvesting, Rainharvesting Systems), natural paint company (Greenshop Paint), as well as the garage and shop. Solar panels and rainwater harvesting systems are installed here, not only because they make us more sustainable, but because they save us money.

The shop now sells organic products, and loose food and cleaning products where you refill your own container, saving packaging. We also sell locally produced wines, beers, spirits, jams and honey. The meat we sell comes from within 5 miles, supporting our local farmers. We try to provide sustainable alternatives to plastic products, such as dustpans made from wood and metal.

Visit us at Holbrook Garage in Calf Way, Bisley, or visit www.greenshopgroup.co.uk/, email or phone 01452 770629.

Opening hours: 9am-6pm Monday to Saturday, 9am-1pm Sundays and bank holidays.



CAROL'S COOKERY CORNER: CHRISTMAS CAKE!

Make this rich fruit cake as soon as you can (to allow it to mature) & keep it in a cool place until needed—the longer, the better.

INGREDIENTS:

- 225g self raising flour
- half a teaspoon salt
- 1 5ml teaspoon ground mixed spice
- 200g butter, softened
- 200g dark brown sugar
- 2 tablespoons black treacle
- 4 medium eggs, lightly beaten
- 800g mixed dried fruit
- 100g mixed peel
- 150g glacé cherries, halved
- 100g walnuts, crushed
- 3 tablespoons brandy or sherry

Pre-heat the oven to 150°/gas mark 3.

This recipe used a round, deep baking tin, 24cm diameter.

Line the bottom and sides of the tin with greaseproof paper.

A band of paper tied round the outside of the tin will prevent burning.



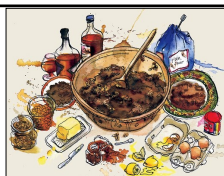
METHOD:

1. In a large mixing bowl, beat together butter, sugar, mixed spice and black treacle until light and fluffy.
2. Beat in the eggs alternately with the flour, until the mixture is a smooth consistency.
3. Slowly fold in the other ingredients, beginning with the mixed dried fruit and finishing with the walnuts.
4. Turn the mixture into the baking tin, making a slight hollow in the centre. Bake for 2+ hours until firm in the centre (time will vary).
5. Whilst still warm (not hot) make holes with a skewer and pour over the brandy/sherry. Leave to cool.
6. Remove from the tin and wrap in greaseproof paper, then cover in foil. Store in a cool place.

To complete the cake: Cover with marzipan, then with ready rolled white icing. To copy the photo, make shapes using food colouring and white icing & stick on—it's easy and different. Be creative!

STIR UP SUNDAY...

Stir Up Sunday, which falls on 26th November (just before the start of Advent), is traditionally an important day for early Christmas preparations.



Its name arising from the Collect for the day in the Book of Common Prayer, which begins, "*Stir up, we beseech thee, O Lord, the wills of thy faithful people...*" the day has become associated with making Christmas puddings, giving plenty of time for the pudding to mature before Christmas Day.

Traditionally, families gather together to stir the pudding mixture, everyone taking a turn, making a wish for the year ahead. Traditionally, the mixture is stirred from east to west in honour of the three wise men, who came from the east to visit the baby Jesus.

In a 2013 survey, 2/3 of British children said that they had never made a Christmas pudding, reflecting the modern preference for ready-made puds. But it's never too late to start a family tradition - *Happy Stir Up Sunday!*



CHALFORD SPORTS & SOCIAL CLUB



WHAT'S ON IN NOVEMBER?

Friday 3rd November

The Usual Suspects

Saturday 18th November

Charity Quiz Night

(in aid of Mindsong & Stroud Women's Refuge)

HIDDEN
IN PLAIN SIGHT



WIN £500!

£10 from Fourways Garage, Eastcombe Stores, Chalford Village Shop, Kings Head, Parish Office & Chalford Sports & Social Club.

COMPETITION ENDS
30th NOVEMBER

For more information, contact

infochalfordssc@gmail.com



BUSSAGE PRIMARY OPEN DAYS

Monday 16th October

Wednesday 15th November

Tuesday 5th December

9.30am
Start

PLEASE BOOK on 01453 883 205

Can't make these dates? EVERY DAY IS AN OPEN DAY!
Please call us to arrange a date.

EASTCOMBE CHRISTMAS LIGHTS 2023!

This year, lighting Eastcombe's Christmas tree will be combined with Eastcombe Primary School's unveiling of their fantastic Christmas windows. Join in the fun on **1st December, 6pm at the school**, with refreshments & Christmas singing. **A lantern-lit procession will then make its way to Eastcombe Green**, where the **Eastcombe Christmas tree lights will be lit by Father Christmas!** Enjoy Christmas music with the Hilltop Band & the Shanty Singers, & mulled wine & cider (and food) at The Lamb Inn.

ALL WELCOME!



VILLAGE HISTORIES... EASTCOMBE'S HOME GUARD

When Britain declared war in September 1939, Churchill, then a member of the War Cabinet, suggested that a home defence force be raised, giving men outside call up age (18 to 41 years) and those in 'reserved occupations' (i.e. agricultural workers and miners) the chance to serve. Initially, the idea had little support, but, in 1940, fears of an invasion grew, and, in May 1940, the Local Defence Volunteers (LDV) was formed. Secretary of State for War, Anthony Eden, made a radio broadcast, calling for volunteers: *"You will not be paid, but you will receive a uniform and will be armed."* It was thought that 500,000 men might volunteer, but 250,000 tried to sign up in the first 7 days, and by July there were 1.5 million volunteers - 1 in 5 non military men. Nor were the age limits (17 to 65 years) strictly enforced: one platoon included a 14 year old and another 3 men in their 80s. Volunteers also had full time jobs.

In July 1940, the 1200 battalions, 5000 companies and 25000 platoons of the LDV were officially renamed the Home Guard, its role a secondary defence in case of invasion, slowing the enemy advance and defending key locations. Each unit had a local strongpoint, which they would aim to defend as long as possible, with contact maintained via a 'runner,' usually a motorbike owner (wireless sets were not issued until 1942). A simple code: 'Cromwell' indicated that an invasion was imminent, and church bells were a call-to-arms, sparking complex rules governing who had keys to bell towers, since ringing was forbidden at all other times. The men undertook regular training, and what they lacked in strength, they made up for in enthusiasm.



Eastcombe Home Guard (left) was formed and run by Mr Laverton, an ex-army officer who lived at The Triangle. The unit commandeered the dilapidated tin church hall as their HQ, and, when invasion seemed imminent, members manned a pillbox by Accommodation Lane 24 hours a day, while, at other entrances to the village, square concrete pillars about 3 feet high were built on both sides of the road, with a telephone pole on a swivel for blocking the road.

It's a common fallacy that the Home Guard never fired a shot in anger, but units actually manned anti-aircraft guns from the Battle of Britain onwards and shot down many Luftwaffe aircraft and V-1 flying bombs. Following the Blitz, they took on the role of locating unexploded bombs in cities; the Home Guard lost 1,206 members on duty, nearly all whilst engaged in this task.

The Home Guard were disbanded on 31 December 1945, 8 months after Germany's surrender. Volunteers were awarded a certificate from King George VI, which read:

"In the years when our Country was in mortal danger, (name) ... gave generously of his time and powers to make himself ready for her defence by force of arms and with his life if need be."

Those who had served more than 3 years could also request a Defence Medal.

With thanks to Muriel Brooks www.eastcombearchive.org.uk/

Frithwood Community Café
**Christmas
Craft Fair**
Frith Youth Centre
Wednesday 8th November
10am - 12 noon
Come along and buy locally
handcrafted gifts for Christmas.
Enjoy a hot drink and home-made
cake.
Meet up for a chat
with friends.


**CHALFORD
MARKET**
CRAFTY & DELICIOUS @ CHALFORD
Sunday 5th November
10am - 1pm

FOOD, DRINK, PLANTS, GIFTS & CRAFTS
Chalford Sports and Social Club
Highfield Way, France Lynch
We encourage you to walk, however if you are driving please
park in the Club carpark.

**COULD YOU CONTRIBUTE TO
THE NEXT NEWSLETTER?**

- An upcoming event?
- An article about your hobby?

Please send contributions to:

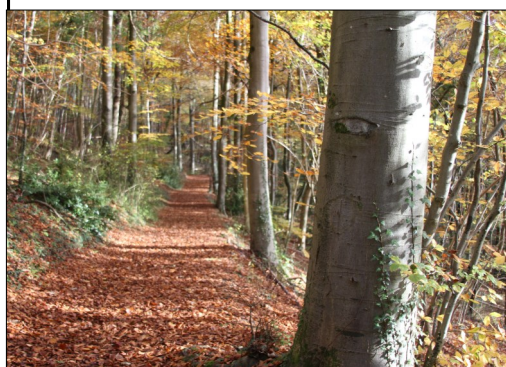
eastcombenewsletter@btinternet.com

by NOON on 20th NOVEMBER

WHAT'S ON in NOVEMBER?

- 1 Nov:** B-w-L Parish Council Meeting, Bisley Village Hall, 7.30pm
- 5 Nov:** Chalford Market, CSSC, 10-1
- 7 Nov:** Hilltop Gardening Club, 2pm, Eastcombe Scout Hut
- 8 Nov:** Frith Community Café Christmas Craft Fair, 10am-12pm
- 11 Nov:** Eastcombe Remembrance Service, 10.45am, Dr Crouch's Road/B-w-L Twinning Association Curry & Quiz Night, Oakridge Village Hall,
- 13 Nov:** Chalford Composting Scheme meeting, Chalford Valley Village Hall, 8pm
- 15 Nov:** Bussage Primary School Open Day, 9.30am
- 16 Nov:** Eastcombe Primary School Stay & Play, 2.15pm
- 18 Nov:** Eastcombe Screen on the Green, 7.30pm, Eastcombe Village Hall/ChalCAN Community Walk, 10am, CSSC
- 19 Nov:** Hilltop Café Church, Eastcombe Village Hall, 2.30pm
- 20 NOVEMBER: DEADLINE FOR DECEMBER NEWSLETTER**
- 25 Nov:** Eastcombe Village Quiz, 7pm, Eastcombe Village Hall
- 29 Nov:** Chalfilm, Chalford Hill Primary School, 7.15pm (8pm)

NAME THAT VIEW!



How well do you know our villages?

October's photo was of The Vatch, between Thomas Keble & the Bussage turn, almost opposite The Triangle. November's photo is taken in or around the 3 villages.

Can you identify its location?

The answer will be revealed in the December issue.