

FOLLOW US
ON
FACEBOOK

60p
FREE Digitally!

June 2023

Eastcombe, Bussage & Brownshill Newsletter

Welcome to the June issue of the newsletter. To receive it FREE on email every month, contact eastcombebambnews@gmail.com to join the circulation list. You can also read the newsletter online at www.chalford-glos.gov.uk/Newsletters_34865.aspx & www.bisley-with-lypiatt.gov.uk/eastcombe/.

Printed copies 60p from **Eastcombe Stores & Post Office, Frith Community Café & Chalford Parish Centre**. The newsletter is also available to customers of **Head First & The Lamb Inn**.

Please send items for the July issue to eastcombenewsletter@btinternet.com by **NOON on 20th JUNE**.

COMMUNITY CORONATION CELEBRATIONS!

The weekend of 6th-8th May saw the Coronation of King Charles III celebrated across the hill top.

Chalford Parish Centre hosted a tea party, Frith Community Café held a celebration and Eastcombe put on an afternoon party, with entertainment from Chalford Band, Ballyhoo Dance & Theatre School, the Ragged & Old Morris Dancers, the Hilltop Band & 'Third Cousin' shanty singers.

The Lamb Inn served delicious food, Cotswold Ice Cream Company was in demand and children enjoyed face painting, soft play and making a crown, with Coronation medals awarded for the best. The bring & buy cake stall raised an amazing £329 for Stroud Food Bank!

A big **THANK YOU** to all who came along and joined in—and to those who helped to organise the day. **Some photos of the fun below...**



BULLS EYE!

CONGRATULATIONS to The Lamb Inn darts team, who recently won the league—and the cup!

BISLEY-WITH-LYPIATT PARISH COUNCIL NEWS: JUNE 2023

<https://bisley-with-lypiatt.gov.uk/>

Eastcombe Allotments: The analysis of the deer and theft survey was unfortunately inconclusive with fewer than 30% of plot holders responding, resulting in no clear indication of suitable remedial action. It was discussed at length at the recent Parish Council meeting on the 3rd May, and it was unfortunate that there was no representation from plot holders at this meeting. Whilst the majority of returns suggested there was an issue with deer encroachment and theft, the council felt that the small number of returns coupled with the fact that approximately 50% of the returnees live outside the Parish boundary meant they could not consent to any solution which would involve a large financial commitment at this time. However, we will continue to monitor the situation and take suitable action if required. We request that anybody observing deer on the allotments informs the Clerk with the details.

Robert Bryant is stepping down as **Allotment Warden** and we would like to offer our thanks for all his hard work and dedication over the last few years. If any plot holder wishes to take over as Warden, please contact the Clerk. Full details of the Warden's responsibilities can be found on our website.

Parish Clerk: It is with regret that Arlene Deane has decided to relinquish her position as Parish Clerk once a replacement is recruited. Do you have the drive and enthusiasm to succeed in this varied and interesting role? The working hours are flexible: from a minimum of 23 hours/week to a maximum of 30 hours/week, but you will be working at home. The successful applicant needs to be pro-active, extremely well organised and have good computer skills, including Excel, Word and Acrobat. Very strong interpersonal and written communication skills, as well as excellent office and financial management skills are required. A basic understanding, or previous experience, of local government is desirable. The Clerk is required to attend all Council meetings, prepare the agenda and write the minutes, as well as being responsible for the day to day running of the Council and its finances. This includes the preparation and presentation of year end accounts for internal and external audit and dealing with HMRC for PAYE and VAT returns. If you are interested in applying for this position, please contact Arlene (admin@bisley-with-lypiatt.gov.uk) who will be able to supply you with a full information pack.

De-Clutter Eastcombe: Following the recent litter-pick and in line with government guidance, it has been decided to carry out a 'de-cluttering' around Eastcombe. This will consist of identifying and removing signage which is no longer relevant, together with fly posters from telegraph poles and pylons. To advertise, please use the notice board on Dr Crouch's Road and remember that Eastcombe Stores also offers advertising space.

Next Meeting: Bisley Village Hall on **Wednesday June 7th at 7.30pm**. All are welcome to attend.

ChalCAN UPDATE: JUNE

ChalCAN

Great Big Green Week 10-18th June:

Saturday 10th June:

A ChalCAN Biodiversity stand on the Green by Chalford Millennium bus stop will focus on how to increase biodiversity in your garden, and the ChalCAN Biodiversity Trail.

11am – A beginner's guide to making compost (in

France Lynch). To register for a place please send an email to Gill at info@chalcan.org.uk. A 2nd compost workshop will be open to Garden Trail ticket holders in the afternoon.

Saturday 17th June

10am – ChalCAN's community walk to highlight areas in the area with best display of biodiversity.

2-4pm – ChalCAN's family friendly bike ride will start from the Millennium bus stop in Chalford Hill/Thomas Keble School. We need about 8 people to marshal the event. If you can help, please contact Gill at info@chalcan.org.uk. Bike and maintenance checks will also be carried out.

A Community Compost Scheme for Chalford: A group of residents are hoping to establish a community compost scheme in Chalford. The first step is to understand the level of demand for a scheme—please fill out our survey at <https://tinyurl.com/3cfafdp2> (hard copy available from the Parish Centre) and tell us what you think, or email Karen Phiminster at kjpmail66@gmail.com.

Other news from ChalCAN:

The Biodiversity Group is planning an event at Sycamore Grove to encourage residents to incorporate nature friendly features. ChalCAN Biodiversity will be helping Bussage schoolchildren to plant a *new hedge* soon. Let us know if you'd like to help.

A *new bike rack* has been successfully installed at Bussage School. We have more installations planned for Eastcombe Scout hut, Frith Youth Centre and France Lynch Church Rooms.

The *Energy Group* continue their surveys to identify where improvements to insulation might help increase energy efficiency. Recent attention has focussed on the Frith Youth Centre.

To find out more about ChalCAN, contact Gill Thomas on info@chalcan.org.uk, visit our website www.chalcan.org.uk/ and follow us on [Facebook](#) or Instagram ([chalford.can](https://www.instagram.com/chalford.can))

Thomas Keble School are looking for a greenhouse to replace a damaged one. If you have one, please let them (or us) know.



GO GREENER!

To make June a bit greener...

Follow the Japanese tradition & wrap Furoshiki style! Use cloth or reusable bags to wrap presents - much greener than single use (often unrecyclable) wrapping paper.



CHALFORD PARISH COUNCIL: JUNE 2023

01453 887204; info@chalford-glos.gov.uk www.chalford-glos.gov.uk. [Facebook](#).



Introducing our new Chair of the Council – Congratulations to Bussage Ward Councillor Emma Trinder, who was elected as the new Chair of the Parish Council at the Annual Meeting of the Council on Thursday 4th May. For those of you who haven't yet met Emma, she grew up on a farm outside Bisley and moved to Bussage with her husband and their dog a couple of years ago, joining the Parish Council in 2022. Look out for more information about Emma and her aspirations on the Parish Council website and Facebook page.

Staffing Change – Further congratulations go to Kate Arnold, who has now started in her role as Parish Clerk, and welcome to Lesley Sellars who has joined the Council as Deputy Clerk/RFO.

King's Coronation - On Thursday 4th May we hosted a Coronation tea party at the Parish Centre. It is always lovely to meet residents, so thank you to everyone that came along—and brought cake!

Circus Sensible – We were pleased to see a large gathering of parents and children taking part in the circus skills event on The Old Common during half-term - the rain just about held off! Thank you to Circus Sensible who ran the event. If you attended, we would welcome your feedback and ideas for future events.

The Old Neighbourhood Inn is on the market again as the owners have not yet found someone to take this venture on. There is a strong desire to prevent the pub from closing and a community group are investigating ways to 'save the hood'. A Public Meeting was held at France Lynch Church Rooms on Friday 26th May and the group need your views, so please email Chris Gardiner (chris.gardiner@gardiners.uk.com), or drop your comments into the Parish Office. Please quote 'Old Neighbourhood Inn' in the email subject line.

Stagecoach - District Cllr Tricia Watson met with Stagecoach and GCC to discuss the cuts to service 67. There are many problems with this service, overcrowding on the early commute being one of them. Stagecoach agreed to replace single decker buses with double deckers to ease this problem. We hope by the time you read this, double deckers will be in place. Further updates to follow.

Footpaths: Field Entrances Part 2 - Last month we described how Footpath Volunteers are making the playing field entrances safer and easier for young children and those with disabilities. At time of writing we have finished work (except for painting) on one France Lynch playing field entrance and are working on another. By the time you read this, we expect (weather permitting) to have moved on to Bussage playing field.

Annual Parish Meeting – On Thursday 11th May, we held our Annual Meeting of the Parish at Chalford Sports and Social Club, celebrating the important work carried out by local volunteers. Thank you to Ali and Rob for hosting us. Approximately 30 residents attended, enjoying a performance by Chalford Senior Band!

Councillor Vacancies – We currently have Councillor vacancies and would love to hear from anyone who would like to join us. You don't have to have a particular skill, or be a certain age, or have previous experience, and you don't have to commit huge amounts of time, just have an interest in helping to shape the future of the Parish. If you'd like an informal chat about what's involved, please contact the Clerk.

Want to find out more about what we do? - Our next Full Council Meeting will be held on Thursday, 1st June 2023 at 7pm. If you would like to attend, please contact the Clerk.

BUSSAGE PRIMARY SCHOOL: JUNE UPDATE:



We would like to thank everyone who attended and helped at our circus event over the Coronation week-end. The PTA raised an incredible £1,770 for the school and it was a fantastic event.

The Eco Ministry also held a book sale to raise money for environmentally themed books for our library, raising a super £210. They have selected a wonderful selection of books to be loaned from our library. The hope is to raise awareness of how everyone in our community can get involved with caring for our environment.



This term, to make learning come alive in their Summer Term theme, 'Invasion', Year 3 and 4 were visited by time travelling detective Professor McGinty, who told them all about his adventures in Viking Britain, where he met Erik the Brave! The children had a fantastic time listening to all of his Viking facts and passing around artefacts typical of the time period, whilst

being entertained by his humorous delivery.

Don't forget... We would love to see you all at our Summer Fayre on the 1st of July.

Finally, our new school year starts in September and we will be able to accommodate children in several year groups. So, if you are looking for a place, or know of anyone who might be moving to the area, we would be delighted to show you around our school. Please contact us on 01453 883 205.

EASTCOMBE WI:



On 16th May, Eastcombe WI celebrated 90 years as an institute.

We were welcomed by our President and started the evening by singing Jerusalem in a nod to tradition. Notices read, we were ready to party.

Starting with glasses of bubbly, we progressed to a wonderful buffet. Our committee had done a wonderful job of organising everything. We had quiz sheets to fill in at our leisure and the evening was topped off by a splendid show from The Ragged and Old Morris Dancers, some of our game members joining in.

Carol thanked the troupe, and Claire thanked the Committee for their terrific work.

Eastcombe WI are a very friendly group of women who enjoy friendships, good speakers and outings. Most meetings are open to visitors for a small fee and new members are always welcome.

Meetings take place on the 3rd Tuesday of the month at 7.15pm at Eastcombe Village Hall, and usually include some form of entertainment.

For more information please contact the Secretary, Glenys Sharpe, on 01453 886298

Eastcombe Baptist Church

A service is held every Sunday morning, at 10:30am, at the church in Dr Crouch's Road, Eastcombe.

LAMBY'S
WAGGY TAIL DOG SHOW
SATURDAY 3RD JUNE
FROM 2PM

£1 PER CATEGORY ENTERED
ALL DOGS WELCOME
LOTS OF POOCHY FUN & PRIZES
CATEGORIES FOR ALL TO ENJOY



INFO@THELAMBINNEASTCOMBE.CO.UK
THELAMBINNEASTCOMBE.CO.UK

Special Anniversary Weekend

At

Eastcombe Baptist Church

We give thanks to God for His sustaining hand in enabling our Pastor to minister here for 20 years.

Saturday 3rd June - 10.30am to 3.30pm:

- 1) Simon Turpin - Answers in Genesis - "Responding to Scoffers of Creation and the Flood."
- 2) Pastor Richard Mortimer - "What Now For Climate Change?"
- 3) Simon Turpin - Answers in Genesis - "Adam: The First & The Last."

Sunday 4th June:

- 4) Dr Sacha Walicord - Morning Service - 10.30 am
- 5) Dr Sacha Walicord - Special Anniversary Service - 3.00 pm

Answers in Genesis booktable - Other booktables on Saturday

01452 770595 - revrpmecb@gmail.com

Please bring packed lunch on the Saturday - Drinks provided

St Michael's & All Angels, Bussage

Visitors are always welcome. There is just one service this month, which is:

- **June 18th - Holy Communion at 11am**

Please Note: This month there will be no Hilltop Cafe Church. It returns on 16th July.

On other Sundays there are services in different parts of the Benefice. For details visit www.bisleybenefice.org.uk or sign up to our mailing list: pewslipsbisley@hotmail.com.

For weddings, funerals & baptisms, contact Revd Sue Murray: vicar@bisleybenefice.org.uk

FRITH COMMUNITY CAFÉ



The Community Cafe enthusiastically celebrated the King's Coronation on 3rd May. We enjoyed a Prosecco toast, red, white and blue cup cakes, sang the National Anthem and Land of Hope and Glory and reflected on the monarchy and how it affects us.

A very happy occasion.



BADGER CREEK COUNTRY MUSIC CLUB

Did you know that a country music club is held once a month at Chalford Sports and Social Club?

The next Badger Creek Country Music Club will take place on June 17th, starting at 8pm. £10 per person. Please contact 07932 642265 for more details.

DISTRICT COUNCILLOR'S NOTES: JUNE

Stroud District Council's **Annual General Meeting** took place on May 18th. Appointments were made for the coming year to council positions and outside bodies. I missed it due to having Covid (for the first time), but I will continue on the Environment and Development Control (planning) Committees. I will also continue as the Council's representative on the Boards of **Stroud Valleys Project** and the **Cotswold National Landscape** (AONB). On the latter, I am on the Climate Change Working Group, developing the AONB's plan for carbon-neutrality, to compliment the Council's own goal of neutrality for the District by 2030.

The AGM also welcomed our newest Councillor, Gary Luff, who won a by-election in Painswick and Upton just the day before, bringing the Green contingent to 14 and maintaining our leadership of the Cooperative Alliance with Lib Dems and Independents. Cllr. Catherine Braun of Wotton remains leader of the Council.

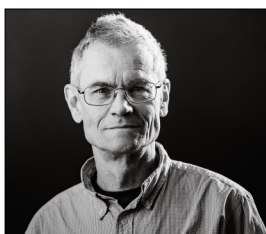
The Council's new **Charity of the Year** is the **Cotswold Dogs and Cats Home**, the focus of fundraising efforts over the next year by staff and councillors. The charity, based in Cambridge, near Slimbridge, cares for and re-homes animals, including dogs, cats and rabbits, and also provides subsidised veterinary clinics for pet owners who are suffering financial hardship.

Stroud District: The Natural Place launched on April 27, a new collaboration with business leaders to stimulate investment in the district by helping people find out what makes our place, our people and our businesses special. It helps enterprises which want to establish themselves in the Stroud district, as well as existing businesses which want to expand or diversify.

Finally, a reminder of the **Big Bike Ride**: A family-friendly mass ride from the Bike Drop at Brimscombe Mills (Long Table/Grace Network) to Stroud Farmers Market every first Saturday of the month, starting at 10am. It's fun! Contact me if you'd like to go together.

As always, please do contact me about anything District Council-related:

Martin Brown, Green Party District Councillor: 01452 770878 or cllr.martin.brown@stroud.gov.uk



In early June, the world of leaf and blade and flowers explodes, and every

sunset is different.

John Steinbeck



EASTCOMBE VILLAGE GROUP

Thank you to everyone who made our Coronation Celebration such a memorable and fun afternoon. The weather was dry and warm, the number of people who came extraordinary, the entertainment amazing, and the atmosphere one of relaxed enjoyment. It was great to see so many families having a good time, including Siobhan Baillie, our local MP, and her family.

Thank you to Ragged & Old Morris, the Hilltop Band, Chalford Band, Ballyhoo, 'Third Cousin' Shanty Singers, Claire Jones, head of Eastcombe Primary School, and Sarah at The Lamb Inn, who all helped make the afternoon a great success. Thanks also to the Parish Council for their grant towards our costs.

Our 'bring and buy' cake stall was a great success, raising over £329 for the Stroud Food Bank. Thank you to all who donated.

On the Friday before the Coronation I was invited to Eastcombe Primary School where the EVG gave each child a souvenir badge and a packet of wild flowers. I also presented Coronation mugs to the winners of a craft competition. Some of the crowns made at school were on parade at the celebration on Sunday 7th May.

Wine Walk: Join us for the Wine Walk on Sunday 30th July. Tickets on sale from mid-June at Eastcombe Stores.

Next meeting: Monday 3rd July, 7.45pm, Village Hall annex.

If you would like to keep up to date with our activities, please contact Chris Sissons csissons52@gmail.com.

Peter Scott: peterhscott@btinternet.com



SCREEN ON THE GREEN

presents

MRS HARRIS GOES TO PARIS

Director: Anthony Fabian

Starring: Lesley Manville,
Lambert Wilson



A widowed cleaning lady in 1950s London falls madly in love with a couture Dior dress. Working, starving and gambling to buy her own, she embarks on an adventure to Paris which will change not only her own outlook, but the future of the House of Dior.

Venue: Eastcombe Village Hall

Date: Saturday 17th June

Time: Doors open 7pm,
Film starts 7.30pm

Admission: £4 per person

Ice Creams £2 each

COMMUNITY RAFFLE

SWIFTS, SWALLOWS & HOUSE MARTINS...

The arrival of swifts, swallows and house martins, all seasonal visitors to the UK, is a welcome sign of spring. While the swift spends most of its time soaring high in the sky, the swallow might be seen perching on a wire, while house martins nest under eaves of houses. But which is which?

Extremely fast high fliers, **swifts** are known for their unrivalled aerial abilities. They arrive in May and you'll see them zooming about until around the end of July, when they depart on their migration.

Swifts are dark brown all over, with a small, pale patch on the throat, a short forked tail, a body of up to 16cm long and a wingspan of 40cm. They're larger than swallows and martins, with long curving wings that make them look a bit like a boomerang in the air. Swifts are very sociable and can often be spotted in groups, calling to each other with high-pitched screams; a group of swifts is actually called a 'scream'! They spend most of their lives flying – sleeping,

eating and drinking on the wing – only ever landing to nest. However, nesting places are increasingly difficult to find as houses are renovated and old buildings demolished. Putting up a nest box can help them - you can make one, or buy one such as this one from the RSPB: [Swift Nest Box](#).

Swallows start arriving in the UK in early April. They are not related to swifts but look similar and also catch airborne prey. They are a glossy dark blue-black above and creamy-white below, with a dark red forehead and throat, bordered by a blue-black band across the top of the breast and a very long, deeply forked tail. You'll see them throughout summer until the start of October, when you might see them gathering on wires in groups as they prepare to migrate. According to the British Trust for Ornithology, a recent run of mild winters has led to a small number of swallows overwintering in the UK instead of migrating south. Swallows have a chattering call, a body of 15 to 20cm long and a wingspan of 32cm. They are often spotted flying low to the ground in darting and gliding motions as they chase insects.

House Martins are smaller than swifts or swallows, glossy black above and completely white below with a white rump and a short, forked tail. As its name suggests, they are often spotted around houses, where they build mud cup nests beneath eaves. Their body is 13cm long and they have a wingspan of 26cm to 29cm (smaller than swifts and swallows). They arrive in April and can be seen throughout summer, until around the end of September.



What to do if you find a baby bird...



A gardeners guide to... Bird Nesting Season



The nesting season runs from March to August - but some birds nest earlier/later



Nests are often well hidden, so you might not know they are there



Birds may be nesting in your trees, shrubs, ivy, hedges, nest boxes, under eaves and on the roof



All wild birds, their nests & eggs are protected by law - this includes gulls, pigeons & crows



Do not cut back hedges, trees and other vegetation during nesting season - this risks disturbing nests



Trim hedges once a year in winter if needed - this gives wildlife the chance to eat any berries

CHALFILM

A new monthly community cinema has rolled out the red carpet at Chalford Hill Primary School, promising a warm welcome with wine, beer, popcorn and ice cream.

The cinema, in the school hall, opens its doors at 7:15pm on the last Wednesday of every month. The next screening, on **31st May**, is the comedy *'Eurovision Song Contest: The Story of Fire Saga'* - the perfect accompaniment and antidote to Eurovision!

"We've tried to think of the little things that you don't get at big screens," say the organisers. "We want the whole community to feel welcome, enjoying social time before the film starts. All proceeds go to Chalford Hill Primary School."

June's screening will take place on **28th June**, and the team are also working on plans for family weekend showings.

To get all the news about Chalfilm, visit us on [Facebook](#) or look out for posters in the community.



HILLTOP GARDENING CLUB HAPPENINGS...

A good number of members and visitors were welcomed to our Hilltop Team talk on Gardening Tips on 2 May. Pam Meecham gave a PowerPoint presentation on ferns, her passion and experience apparent. She has transformed a shady area in her garden from a bland hillside to one full of interesting ferns and other shade lovers. Her mantras are Beth Chatto's *'right plant in the right place'* and Marjorie Fish's *'when in doubt, plant a geranium!'* Pam's garden at 'Penny Leaze' will be open for the Chalford and France Lynch Garden Trail on the afternoon of 10th and 11th June.

Ruth Fraser brought an element of fun to the evening, disappearing to the back of the room to seek out mysterious objects, including a large trug of not-to-be-without tools, such as dibbers and odd shaped short iron stakes. Her demonstration on how to put up a carrot cage was very amusing.

The evening ended with a talk on 'Meadows: how to create your own' - a whirlwind tour through all sorts of meadows, including the **'Coronation Meadows Project'** led by Plantlife. Charles III, their patron, called for the creation of new meadows back in 2012 - one at least in each county. Approximately 97% of meadows have been lost in the UK since the 2nd World War, but **'Glorious Cotswolds Grasslands'**, an ongoing project, has found many flora-rich sites, some created using seed from donor farmers. **The project is looking for new sites- ideally open and sunny, which link to other meadows to create wildlife corridors.** We looked at different ways of growing wild flora in our own gardens, including with seed-impregnated 'carpet' and seed mixes for annual and perennial meadows suitable for different soils and aspect. So excited was I in researching this, that I raced out to buy my experimental biodegradable tissue paper seeded 'carpet' (not plastic!) and planted it in the rain! A perfect use of a wet afternoon!

Next meeting: 6th June: Duncan Coombs' talk on 'Serre de la Madonne: Lawrence Johnston's other garden' in the south of France (Lawrence created the garden at Hidcote Manor in Gloucestershire.).

Meetings take place at Eastcombe Village Hall, at 7.15pm (coffee), with talks starting at 7.45pm.

Hope to see you!

Jenny Exley Shared Programme Secretary with Kathy Eccott.



CHALFORD HILL PRIMARY SCHOOL SUMMER FAYRE

Chalford Hill Primary School Summer Fayre takes place on Saturday 8th July, 11am-3pm. With a BBQ, traditional fayre, games, entertainment from local dance groups, a band, music sessions for children, a bar, bouncy castle and much more, there will be something for everyone.

This year, there will be a baking competition and cake sale. To be in with a chance of being crowned Chalford Hill Bake Off King or Queen, please email PTA@chalfordhill.gloucs.sch.uk.



FRITH YOUTH CENTRE:

SUPPORTING YOUNG PEOPLE ON THE HILL TOP

£146 raised by the raffle at February's Eastcombe Screen on the Green was recently gratefully received by Frith Youth Centre. Here is some information about the Centre from those who run it:

Who are we? We are a small team of youth workers — Liam, Cindy and Ruth—who run youth sessions for 10-17 year olds at the Centre, 3 evenings a week. We started in the summer of 2021, with a new approach.

What do we do? We offer guidance about the daily challenges young people face, organising regular craft, music and sporting activities, as well as discussions on hot topics such as diversity, equality and politics. We support members with additional needs and disabilities.

How do we measure success? In March, statistics showed a reduction in anti-social behaviour in the villages surrounding the Youth Centre compared with before the new team took over. Regular engagement with as many young people as possible has a positive impact on both them and the local community. Last year 181 new young people joined the Youth Centre.

Funding: Funding is essential and we are very grateful for local financial support, especially from the Community Café and the recent donation from the Screen on the Green. We try to make good use of any funding offered.

Finally some quotes from the young people about Frith Youth Centre:

"It teaches us about discipline"

"It's cool, has good cooking and fun games"

"I learnt a lot of new skills"

For more information about the Centre, visit www.frithyouthcentre.org/ or their [Facebook](#) page.



CAROL'S COOKERY CORNER: STRAWBERRY SMOOTHIE

Get your fruit fix with this strawberry, banana and orange juice smoothie. Free from dairy, it's vegan too – making it a great start to your day!

Preparation: 5 mins. Serves 2

INGREDIENTS:

20 strawberries, hulled (approx. 350g)
2 small bananas, sliced
200ml orange juice, chilled

METHOD:

1. Blitz the strawberries in a blender with the banana and orange juice until smooth.
2. Pour the smoothie into a tall glass to serve.



Eastcombe School Association

Gnomehunt

8th - 9th July 1pm til 4pm

£3 Per map

Start: Collect your maps from Eastcombe Primary School - 01284 7181

Follow the map route to find all of our wonderful gnomes.

Finish: Return your maps and collect your prize from Eastcombe Village Hall 01284 7181

THAT'S NOT ALL! FOLKS! Increase and drink too much! Baffle Pocket Money Snail, New Gnomes, Salt Shakers, Cakes, Prizes, Snail, Tumbler, Name the Gnome

For more information follow us on Facebook

01284 7181

CHALFORD SPORTS & SOCIAL CLUB: Food Vendor Fridays

The summer sees 'Food Vendor Fridays' return to Chalford Sports & Social Club. Bring the family for tasty food, a great choice of drinks and plenty of room outside for the kids to play. Food served from 5.30pm until sold out.

- 2nd June - Wood-fired Pizzas
- 9th June - Tacosaurus
- 16th June- Cornish Pasties
- 24th June - TBC
- 30th June - Lhamos Momo

Hope to see you there!

5:30 PM JUNE 9TH 10TH BEER FESTIVAL

TACOSAURUS

THE TACOSAURUS MEX £9
Beef birria taco with slow cooked red pepper sauce, pickled red onions and rocket

TRITACOTOPS £9
Desperado fried monkfish taco with salsa verde, pineapple pico de gallo and lettuce

CAULIDAPTOR £6
Desperado fried cauliflower with sweetcorn and bean salsa and basil aioli (vegan)

FUNGISAURUS £6
Pulled mushroom with pico de gallo, pickled red onion and guacamole (vegan)

YOU ARE HERE

© CHALFORD SPORTS AND SOCIAL



A DAY IN THE LIFE OF AN INVIGILATOR ...

With the exam season underway, an insight into those who help make exams happen.

Invigilating is not the best paid job in the world (the hourly rate starts at around £10.50) but it can fit round other commitments, with separate morning and afternoon sessions, usually within the school day. It is also a caring role - teachers and parents aren't allowed into public exams, so invigilators take on the job of looking after the well-being of students in what can be a stressful situation, keeping things calm, organised and fair to enable all students to do their best.



As the job title suggests, invigilators are required to be vigilant, keeping watch and being on hand to answer queries (NOT 'What shall I write?!') The job is very varied, and includes collecting papers from the exams office, with the attendant strict protocols, and putting them out to a pre-determined seating plan, which is displayed on the wall. Students with additional needs are accommodated, including those using lap tops, with rest breaks or extra time, health conditions or injuries. For a few, it might be appropriate to sit papers in a smaller room, such as those who are very anxious, or have been assessed as needing special arrangements such as a scribe.

Invigilators ensure that students enter and exit the exam room according to the rules, with no communicating, and that phones and electronic equipment are switched off and stowed in bags. Once seated, the formal rules are read out, then the exam can begin. During exams, invigilators keep watch, give out equipment if needed and escort students to the toilet - as with most

elements of the job, toilet breaks are recorded - invigilating is not short on paperwork! Toilets are also checked regularly to ensure no passing of notes or in-exam cheating.

The job is not without its fun side - any activity involving other humans will always have an element of the ridiculous. The very tall student who stretches and their desk disintegrates, inappropriate noises or smells (mercifully rare), tap dancing seagulls on the roof, sleeping students - these are generally left to slumber if they've finished, although those dropping off their chair - literally - are woken for their own safety. Most memorable was the student who arrived late and dripping wet, having fallen into the canal on the way to school - after a shower and a change of clothes they were able to sit their exam. Indeed, most students arriving late are given the full duration of the exam, although there has to be a cut off time for lateness.

Sometimes the unexpected happens - students can be taken ill or become upset; should this happen, they are escorted out and looked after, and, if they are able to continue, the time missed is added on.

Invigilators get very good at communicating almost silently, and, although it can be a busy role, there is often a sense of camaraderie and humour. So, if you enjoy working as part of a team and are available for casual but regular work periods throughout the year (as well as public exams, mocks are now often run with outside invigilators) maybe invigilating is for you. Contact your local secondary school and ask about opportunities.

Finally—and most importantly - GOOD LUCK to all those sitting exams.

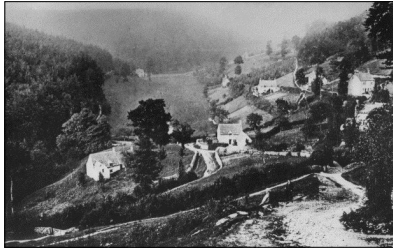
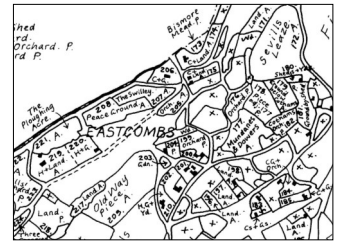
The invigilators will do their very best to help YOU do your best.



VILLAGE HISTORIES: CHANGING BISMORE...

Bismore is part of the Eastcombe Conservation Area, and, in some ways, it hasn't changed greatly over the last couple of centuries. However, as these photographs show, there *are* differences.

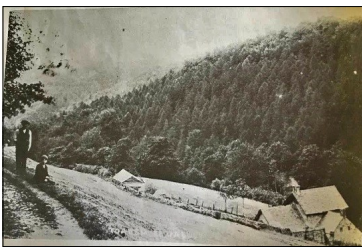
Many of the existing Bismore cottages appear on the tithe map of 1842 (right), where Old Way Piece is the site of what is now Old Hill/Bismore Lane, and, in the section around the word 'EASTCOMBS' a dashed line shows the track from Old Hill, past Bismore Farm to Toadsmoor Hill. This track (slanting diagonally up from the bottom left of the 1880s photo below) once passed a house in a sizable plot on the right hand side, while, opposite Cuthams Cottage, there was an orchard. Near the steep path leading up from the Cuthams Stile stepping stones to join the track, two cottages are recorded, one of which was the site of the infamous Bismore murder in 1830.



Bismore in the 1880s: The photo left, taken from near Old Hill, shows Fairview (now much extended) in the centre, close to Swilley Bridge, with Little Bismore Cottage above and to the right. Honeyhill, at that time two cottages (two doorways are visible) stands to the right hand side, while Woodlands (centre right) and Keepers Cottage (centre left) lie in the distance. Today, many of these cottages are obscured by trees, while others have disappeared altogether. The large cottage in the field below the bridge, towards the bottom left of the photo, is no longer there, nor are cottages that stood behind Honeyhill, or a cottage that once lay on the other side of the path to Fairview.

In the **post WWI** photo, right, a whitewashed cottage (plus beautifully tended garden) are visible at the bottom of Old Hill, near to Little Orchard; this cottage has vanished, although Little Orchard remains today.

There have been other changes, too. The wooded hill sides of the Toadsmoor Valley were cleared of trees for the war effort in both world wars, while the stream in Bismore Meadow, between Swilley Bridge and Keepers Cottage, is shown in Victorian photographs and maps as a straight culverted channel, with the ground either side well-drained and cut for hay - so well-managed that a Bismore cricket team was once able to play there! In recent years, the meadow has been largely left to its own devices and the culverted stream has reverted to a meandering course, often spilling into the meadow.



Enclosure came relatively late to the hill top, but, in 1869, land was enclosed at 'Bismore Bottom' where the farmhouse of Bismore Farm was built by the Doringtons of Lypiatt Park; this still exists, although the building has been altered over the years. Despite enclosure, the fields of the farm remained relatively open for several decades, as shown in the photo from 1910, shown left. In living memory, villagers wandered freely here on what had once been Toadsmoor Common, but in recent years fences have restricted walkers to designated footpaths.

Bismore was also once at the centre of a network of roads, leading to Stroud and beyond, but more of that another time...

CSSC **SATURDAY 10TH JUNE 2023**

BEER FESTIVAL

1 PM UNTIL 11.30PM

LIVE BANDS

BANGALORE TORPEDOES
LOKI, TRIPWIRE & CHINESE BURN

Fund Raising Football match between 1pm & 3pm, mixture of over 30's, 40's and 50's
Dusting off the boots for the chance of one last magic moment

Chalford Sports and Social Club
Highfield Way, France Lynch
We encourage you to walk, however if you are driving, park in the Club car park please

An evening of
Cheese & Wine
with
Manteca

Tickets £20
to inc. Cheese & Wine tasting
alongside wonderful live music!

23rd June 2023
from 7pm

The Lamb Inn, Eastcombe

info@thelambinneastcombe.co.uk
thelambinneastcombe.co.uk

COULD YOU CONTRIBUTE TO THE NEXT NEWSLETTER?

- An upcoming event?
- An article on local history?

Please send contributions to:
eastcombenewsletter@btinternet.com
by **NOON on 20th JUNE.**

WHAT'S ON in JUNE?

- 1 June:** Chalford PC meeting, 7pm
- 3-4 June:** Special Anniversary Weekend, Eastcombe Baptist Church
- 3 June:** Lamb Inn Waggy Tail Dog Show, 2pm
- 6 June:** Hilltop Gardening Club meeting, 7.15pm (7.45pm), Eastcombe Village Hall
- 7 June:** B-w-L PC meeting, 7.30pm, Bisley Village Hall
- 10-18 June:** ChalCAN Great Big Green Week
- 10 June:** Beer Festival, CSSC, 1pm-11.30pm
- 14 June:** Chalford Market, 10am-1pm, CSSC
- 17 June:** Eastcombe Screen on the Green, 7pm (7.30pm), Eastcombe Village Hall/Whiteshillbillies at The Lamb Inn, 7pm/ChalCAN Community Walk, CSSC, 10am/ChalCAN Community Bike Ride 2-4pm/Badger Creek CMC, CSSC, 8pm
- 23 June:** Cheese & Wine evening with Manteca, The Lamb Inn, 7pm
- 20 JUNE: DEADLINE FOR JULY NEWSLETTER**
- 28 June:** Chalfilm screening, Chalford Hill Primary School, 7.15pm

NAME THAT VIEW! How well do you know our villages?



May's photo was of the waterfall at Swilley Bridge, Bismore.

June's photo is once again taken in or around the 3 villages.

Can you identify its location?

The answer will be revealed in the July issue.