

FOLLOW US ON FACEBOOK

April 2023

60p
FREE Digitally!

Eastcombe, Bussage & Brownshill Newsletter

Welcome to the April issue of the newsletter. To receive the newsletter **FREE** on email every month, please contact eastcombebambnews@gmail.com to join the circulation list. You can also read the newsletter online at www.chalford-glos.gov.uk/Newsletters_34865.aspx.

Printed copies 60p each from **Eastcombe Stores, Eastcombe Post Office, Frith Community Café & Chalford Parish Centre.** The newsletter is also available to customers of **Head First & The Lamb Inn.** Please send items for the May issue to eastcombenewsletter@btinternet.com by **NOON on 20th APRIL.**

COULD YOU HELP RUN THE COMMUNITY CAFÉ?



I have enjoyed running the Frith Community Café for 12 years, but now I feel it is time to hang up my apron. Therefore, I am looking for new people to lead the cafe. Would you like to be a part of this very successful Community Café? We have many excellent volunteers who are a joy to work with each Wednesday morning, and I will still be around to guide you.

Profits go to Frith Youth Centre to enhance their excellent work.

If you are interested in finding out more about this role, please phone me on 01453 884584.

Carol Lambert



A NEW POND FOR EASTCOMBE?

It has been proposed that Eastcombe's Millennium Wheel be turned into a new wildlife oasis.

What do you think? Email your views:
april1stcommittee@gmail.com

Eastcombe Coronation
Celebration
**CAKES
NEEDED!**
BRING & BUY CAKE STALL
on Eastcombe Village Green
Please bring along donations of
cakes & sweet treats
between 12-5pm on
Sunday, 7th May
Thank You!
IN AID OF STROUD FOODBANK


EASTER WEEKEND
THE LAMB INN, EASTCOMBE
SATURDAY 8TH APRIL
Get the kids involved this weekend with our
Easter Egg Hunt. Chocolate prize at the end!
2-4pm
(Children must be accompanied by an Adult)
SUNDAY 9TH APRIL
Join us for a delicious Roast Dinner
12-6pm
Followed by live music from El Diablo
8-10pm

Eastcombe Coronation Celebrations: Sunday 7th May: ROAD CLOSURE



Eastcombe are looking forward to a vibrant village celebration of this historic event.

Advanced notice that on Sunday the 7th May 2023, Dr Crouch's Road and vehicle access to Eastcombe Village Green will be closed to through traffic from 10am until 6pm. The closure will be suitably signposted. Access to the lower part of Eastcombe village will be maintained.

Local residents are asked to minimise any vehicle traffic in this zone over the period of closure. If traffic movement is essential, please drive with special care and give pedestrians priority.

If this causes any problems or raises any questions, please contact Colin Clifton on 07958 761507.

We would also like to strengthen **First Aid cover** on the day of the celebrations. **If any trained local person can assist, please advise Colin on 07958 761507.** It would also be useful to have access to a well-stocked first aid kit if any local organisation or person is in a position to loan one for the day.

Thank you.

MENTORS MEAN A LOT...

Volunteer with The Door this spring and help turn someone's life around.

The Door is looking for individuals of all experiences and backgrounds to join their award-winning volunteer mentoring team. Mentors meet for an hour or so a week with a young person or parent to offer a listening ear and help them make positive steps forwards:

"It is an amazing privilege to be a mentor for someone - so much of the time it is about being there for them, allowing them space and time to work through thoughts and worries and process what's going on in their lives. At The Door we mentor for as long as our mentees need us, so you really get to know the people you support, learning about their dreams and passions as well as working through their challenges. It is a great thing to do with my spare time and only takes about an hour a week. Even when I am busy, I get to step out of my world and into this safe space for someone else."

If you would like to become a mentor, simply download an application form from thedoor.org.uk/volunteer, call the office on 01453 756745 or drop an email to info@thedoor.org.uk

Volunteers need to provide 2 references, complete a DBS check and take part in an introductory training course. The next course starts on 13th April, with more courses taking place at intervals throughout the year.

Thank you—we look forward to hearing from you.



DISTRICT COUNCILLOR'S NOTES: APRIL 2023

The Council Budget for 2023-4 was approved unanimously at the Council Meeting on February 16th. The budget represents 3% rise in the SDC element of Council Tax. SDC services make up approximately 11% of the overall Council Tax bill (the rest is County, police and fire etc.). Included is new funding for community and environmental projects: £764,000 towards renewable energy projects at The Pulse and Stratford Park Leisure Centres and the Museum in the Park; half a million pounds for walking and cycling schemes; £150,000 (on top of £300,000 already committed) to play areas for Stratford Park; part-funding for 15 homes for people fleeing conflict, and support for voluntary sector organisations who work with refugees and asylum seekers. The council will continue with 100% Council Tax Support for people in need.

Council house, shared ownership, and garage **rents**, and landlord service charges, will increase by 7%, in line with the Government policy statement. Most SDC car park charges in Stroud will be frozen in 2023/24.

The new Strategic Lead on **Nature Recovery and Biodiversity**, Rebecca Charley, is now in post. Rebecca joins SDC from the National Trust and is well connected in the county's ecology and land community. GCC have also just taken on a **bio-diversity officer**, Adam Spokes, and the **Local Nature Partnership** have a new Manager, Nicola Hillary; it's encouraging that this important work is now being properly resourced.

We now have a **Bicycle Mayor** for Stroud District, an advocate for all things cycling in the district.

Some damaged **dogs bins** in Bisley and Oakridge have been removed by the council—to be replaced soon.

As always, please contact me if I can help in any way: Martin Brown, Green Party District Councillor: 01452 770878 or cllr.martin.brown@stroud.gov.uk

Other Useful Contacts: Bisley-with-Lypiatt Parish: 01452 771089; District: 01453 766321 (out of hours 01453 222104). Other contact details are on the websites of the 3 councils (Parish, District, and County).

EASTCOMBE PRIMARY SCHOOL: APRIL UPDATE:

At Eastcombe Primary we work hard to ensure our children get much more than just the National Curriculum, dedicating time to a wide range of enrichment opportunities, helping the children to discover new talents, be curious about the wider world, shine in different areas and make memories.

Here is a small flavour of the breadth of opportunities enjoyed by the children recently:

- Owl class took part in the Mock Trial competition, where Mrs Monk was incredibly proud of and impressed by the children's loud, clear speaking voices and ability to think on their feet to give clear responses to questions. The High Sheriff of Gloucester, who was present, praised our defence team and we are delighted to announce that the children came 2nd overall, missing out on 1st place by just half a mark!
- We also came 1st in the small schools competition, meaning we won a shield. Massive congratulations go to Jonah, who was awarded 'most outstanding pupil' from the whole competition and also to Jude for winning the reporters prize. We are blown away by the result and couldn't have done it without the children working so well as a team.
- A big well done to the team of runners who went to the cross country running event at Stratford Park. They all represented the school brilliantly and raced well, in challenging conditions.
- Owl and Hedgehog class went for a relaxing well-being walk through the woods down below the school. Those children with wellies also had a chance to paddle in the stream!

Spring is arriving in Frith Wood

The plants and trees are coming into life. Every time we tread on a bluebell plant it sets it back for a year. So please keep to the main paths, marked by signs or the natural hedging.

The two fenced areas in the wood are nature sanctuaries, giving space for woodland plants, birds and insects to live undisturbed. We are grateful to everyone in the community who helped to make these happen.

THANK YOU FOR PROTECTING FRITH WOOD!

Find out more, volunteer and keep in touch:
www.frithwoodfriends.org.uk FB:frithwoodfriends 07973 529603



'GO GREENER!'

To make April a bit greener...

STICK TO THE PATHS!

Keep off emerging plants to help biodiversity—and ensure a better display of spring flowers!

Bisley, Eastcombe & Oakridge Climate Action Network



CHALFORD PARISH COUNCIL: APRIL 2023

01453 887204; info@chalford-glos.gov.uk www.chalford-glos.gov.uk. [Facebook](#).



In February, our County Cllr Chloe Turner, District Cllr Tricia Watson and the Clerk from Brimscombe and Thrupp Parish Council, met with **Stagecoach**. Although the meeting was useful, changes to the timetable implemented on 19 February cannot be changed. We need to collect data, including where people catch the bus and which buses are used the most and least.

Bussage Ward Parish Councillor vacancies – are you interested in local issues and looking for a new challenge? Could you provide a voice for residents? If you are passionate about this area and want to make a difference, then come and join us. Want to know more? Contact the Parish Centre.

Frithwood Surgery Health Walks will resume in April—free! The route focuses on the green spaces surrounding the surgery, is easy to do with sturdy shoes or trainers and suitable for buggies. The walks will run every 2 weeks, 2pm on a Wednesday afternoon, starting at the surgery and ending up at The Parish Centre for refreshments. A lovely way to get outside and meet new people in the (hopefully) better spring weather.

Terracycle - We collect items for recycling at the Parish Centre. What is accepted is quite specific - contact us to get a copy of the latest list. To assist the volunteers, please sort items into categories. Many thanks.

Tree Planting in Bussage Pleasure Ground: Last year ChalCAN planted 11 trees in BPG, and a further five trees may even be in place by the time you read this. Thanks to ChalCAN for their hard work.

Speed Watch – Are you passionate about helping to reduce speeding in the parish? We are looking for volunteers to join our community speed watch group. If this is of interest to you, please get in touch.

Warm Room: In October we started the 'warm room' on a 3 month trial. We are pleased to say that it will continue! Thank you to our wonderful volunteers for making it such a success—the home-made soup is enjoyed by all. Please come along on a Friday 12-2pm at the Frith Youth Centre. Everyone is welcome.

The Old Neighbourhood Inn sold prior to auction to a Twickenham based company. We are in contact with the new owners and are very pleased to learn that the pub will be let on a 'free of tie' basis. There is strong community support and we can't wait to see the pub re-open, so watch this space!

Mini food bank – this service relies on generous donations from residents. If you can spare a tin or a packet, please bring to the Parish Centre. Thank you to everyone who provides us with regular donations.

Footpath waymarks help you – here's how: Public Rights of Way (PROW) are paths that the public have a legal right to use and signs are used to show users the way the route goes, so they can be confident they are not trespassing. Yellow arrows on waymarks indicate public footpaths, blue arrows indicate bridleways, where users have the same rights as footpaths, but cyclists and horses are also allowed. Rarer purple and red arrows show restricted byways and byways open to all traffic, respectively.

Why Not Come Along to a Meeting? - Our next Full Council Meeting will be held on Thursday, 6 April 2023 at 7pm. Please contact the Clerk beforehand to find out where the meeting will be held and to let her know if you would like to attend, particularly if you wish to speak, so that she can make time for your issue on the agenda.

BUSSAGE PRIMARY SCHOOL APRIL UPDATE

The children had a wonderful time celebrating World Book Day on 2nd March, with an amazing array of costumes and characters from both staff and children, celebrating the importance of reading. Throughout the day the school bell would ring periodically, and everyone would 'Drop everything and read!' The children loved talking about their favourite books and some classes participated in live sessions online with authors and illustrators.

Year 3 & 4 are currently learning about history in their theme, 'Stone Age Rocks!' As part of their experiential learning, both classes visited Greystones Farm in Bourton-on-the-Water to participate in a day of Iron Age living, when they learned how to cook on an open fire and create wattle and daub structures in the Iron age style. The children loved spending time in the magnificent Roundhouse and returned to school full of tales, wearing traditional blue Celtic face paint and smelling of the fire pit. They were extremely grateful to have this experience offered free by Gloucestershire Wildlife Trust.

The children and staff at Bussage love to dress up, and Red Nose Day was no exception! The Charity Ministry sent out letters to the school community, inviting them to wear red or something sporty and also to participate in a talent competition and to do a red nose design. There was an amazing range of talents on display, which culminated in the winner from each class performing to the whole school.

Visit us! If you have a child starting school soon, we would love to show you around. Contact 01453 883 205 for more details.



CLERK TO THE GOVERNORS

Bussage Primary School are looking for an organised Clerk to help maintain records and school governance information. The position is approximately 120 hours a year and does require flexibility as the Full Governing Body meetings take place in the evening, on pre-arranged dates within the school year.

Please contact: admin@bussage.glos.sch.uk for the full job description and more information. Previous experience as a Clerk to Governors or a similar committee is desirable, but not essential.

Bussage PTA Event - Registered charity no: 1112166

Help raise money for Bussage Primary School PTA by drinking wine and taking part in a fun quiz! 'Call my Quaff' will involve blind tasting of 6 wines, with prizes.

Please join us for

Wine Tasting

Friday 21st April
7pm - 10pm
Bussage Primary School

Hosted by 

Tickets £15 per person
Scan the QR code or go to shorturl.at/eIW15

Book your tickets at:
<https://bussage-primary-school.pta.wine-tasting.com/>
or scan the QR code



[BOOK TICKETS HERE!](#)

Eastcombe Baptist Church

A service is held every Sunday morning, at 10:30am, at the church in Dr Crouch's Road.

EASTCOMBE VILLAGE GROUP



With just weeks to go before the Coronation, preparations for the EASTCOMBE CELEBRATION LUNCH on SUNDAY 7TH MAY are well advanced. Join in the fun from 12 noon!

Roads around Eastcombe Green will be closed, with tables and chairs set out on Dr Crouch's Road. The Green and Dr Crouch's Road will be decorated (including 'yarn bombing', courtesy of Eastcombe WI), and we hope to display the work of Eastcombe Primary School pupils on the day.

Please bring **picnics** (plus chairs if sitting on the Green), or buy **lunch** from The Lamb Inn or Eastcombe Stores. The Lamb Inn will also be serving Sunday lunch, booking recommended.

ENTERTAINMENT: already confirmed are the **Ragged and Old Morris Dancers**, Eastcombe's **shanty singing group**, **'Third Cousin'**, the **Hilltop Band** and, last but definitely not least, the **Chalford Band**, recent winners of the SW regional competition! Watch this space for further updates.

THE CELEBRATIONS WILL BE ESPECIALLY FAMILY FRIENDLY, with **soft play**, **face painting** and a **Coronation Trail** around the village. There will also be a **bring and buy cake stall**, with all proceeds going to the Stroud Food Bank, and **ice creams** will be on sale.

We need VOLUNTEERS to help set up on Sunday morning (meet at the Green from 9.30am), and to clear up from around 4.30pm. We are also hoping for lots of **donations of cakes** and sweet treats for the cake stall, bakers and shoppers please note!

OTHER NEWS: Our next meeting will take place on **Monday 3 April at 7.45pm in the Village Hall annex** (note slightly earlier time). Join us to help plan future events, including the Wine Walk on Sunday 30 July.

If you would like to keep up to date with EVG activities, please contact Chris Sissons on csissons52@gmail.com.

We look forward to seeing you and your families on Sunday 7th May.

Peter Scott
peterhscott@btinternet.com

St Michael's & All Angels, Bussage

Visitors are always welcome. Services for this month are:

April 2nd Palm Sunday: Morning Prayer, 9.30am
April 7th: Good Friday: Stations of the Cross, 12 noon
April 9th: Easter Sunday: Holy Communion, 9.30am
April 16th: Morning Prayer, 9.30am
April 16th: Hilltop Cafe Church, 2.30pm, Eastcombe Village Hall (see poster)

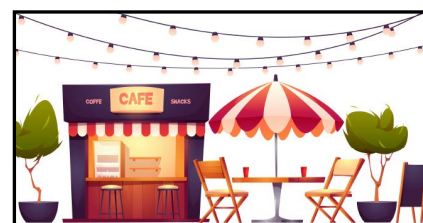
*Morning Prayer is a simpler and shorter service

On other Sundays there are services in different parts of the Benefice. For details visit

www.bisleybenefice.org.uk or sign up to our mailing list: pewslipsbisley@hotmail.com. For weddings, funerals & baptisms, contact Revd Sue Murray: vicar@bisleybenefice.org.uk

NOTICE: REVISION OF CHURCH ELECTORAL ROLL

Notice is hereby given that the Church Electoral Roll will be revised by the Parochial Church Council from **Sunday the 2nd day of April 2023 to Sunday the 16th day of April 2023**. After Revision, a copy of the Roll will be exhibited for not less than 14 days on or near the principal door of the Parish Church for inspection.



HILLTOP CAFÉ CHURCH

Christian worship for those of all faiths and none.

Sunday 16th April

2.30PM

EASTCOMBE VILLAGE HALL

Outdoor cafe vector created by ukiyaki - www.freepik.com

CHALCAN UPDATE: APRIL 2023

ChalCAN

Great Big Green Week: 10-18th June: ChalCAN will be running events on the theme of sustainability and we hope local groups and schools will join in. Let us know what you might do, or, if you need ideas, get in touch and we will suggest something.

Would you like to grow veg to help people struggling for food? John Seex is hoping that Chalford residents can contribute to local food hubs from their gardens and allotments. At harvest, he would take veg to the hubs, where people can pick up food - free or for a donation. To get involved, please contact John at johnseex43@gmail.com.

Early Bird Community Walk: Saturday April 29th, 7.30am from Chalford Sports and Social Club, with bird enthusiasts Barbara Wood and Jim Bocock helping to identify birdsong. Everyone welcome, including children, but leave your dog at home. To register your intention to come along, contact info@chalcan.org.uk

ChalCAN Biodiversity Action has put up bird and bat boxes and helped the children of Chalford Hill School on their recent mass tree-planting day. If you have any tree seedlings you could donate to be planted in our villages, please drop them off at the Parish Centre, or contact us if we need to pick them up.

ChalCAN Transport talked recently to parents outside Chalford Hill School about **getting children to school safely**. Parents can help by: walking to school with their children, parking further away and walking, and ensuring that you park with room for passing vehicles.

The first **bike rack** funded by a grant to ChalCAN from the GCC Build Back Better Grant is being installed at Bussage School – hopefully this will encourage more children to come to school by bike.

Loft Insulation: Recent free surveys offered by **ChalCAN Energy** have revealed that most houses could improve their loft insulation. Typical issues include: insufficient insulation (recommended depth 27cm); gaps in insulation layers; boards squashing insulation, making it ineffective. Improving insulation is an effective way to reduce heat loss and reduce your heating bills. Contact us for a consultation.

To get involved with ChalCAN please contact us: info@chalcan.org.uk, or visit our [Facebook](#) page.



EASTCOMBE WI

Our March meeting began with official business: correspondence, the Institute's 90th birthday, NFWI 2023 resolution and Gloucestershire events. Eastcombe WI raised £73 for the Turkish Earthquake Appeal, and cakes were requested for the NGS Open Gardens Event at the beginning of May.

We then heard from Fergus Dignan on the work of the Gloucestershire Wildlife Trust. Our area has an abundance of small reserves, and Crickley Hill is a gateway reserve with information, shop and cafe facilities. Fergus spoke of the various activities and the plans for involving more people and developing their gardens for wildlife (insects, flowers and animals). His enthusiasm and humour were encouraging, and he was thanked by Mary and the audience.

Eastcombe WI are a very friendly group of women who enjoy friendships, good speakers and outings. Most meetings are open to visitors for a small fee and new members are always welcome. We enjoy luncheon club, craft, book club and scrabble meetings.

Meetings take place on the 3rd Tuesday of the month at 7.15pm at Eastcombe Village Hall, and usually include some form of entertainment. We look forward to warmly welcoming you.

For more information please contact the Secretary, Glenys Sharpe, on 01453 886298



There will be no
SCREEN ON THE GREEN in
Eastcombe in April.
Watch out for it again in
May!

**I'm Lending
a Hand**



**Monday
8th May**

Find out more at
thebighelpout.org.uk

EASTCOMBE BUS SHELTER BOOK SWAP

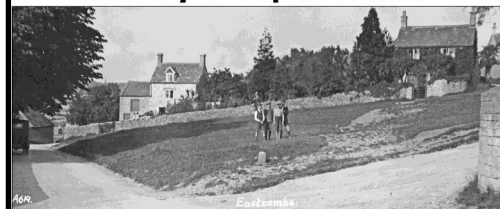
Please do not leave items other than books in the shelter—please donate these to charity shops or give them away on [Freecycle](https://www.freecycle.org).

THANK YOU.



INTERESTED IN LOCAL HISTORY?

Join the **Eastcombe & Bismore Local History Group** on Facebook.



THE CHANGING MOON...

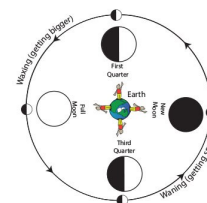


The moon is a familiar sight in our night sky, a little different each night. It has no light of its own, but, during its one month orbit of our planet, the sun lights up whichever side of the Moon is facing it so that we see different portions, it appearing to *wax* (get bigger) and *wane* (get smaller), changing from a full moon to a 'new moon' (which we can't really see, because the lit side is facing away from us).

A full moon occurs when the side of the moon facing Earth is fully lit up by the sun, which occurs about once a month (or 29.53 days, on average). But not all full moons look the same. Sometimes, the moon appears to glow red. Other times, it appears larger than usual in our night sky. The moon is not actually changing in colour or size - how it appears to us is due to its position in relation to the sun and Earth.

2023 will have 13 full moons - most months have one each, but August will have two, both 'Super Moons' - and the 2nd a 'Super Blue Moon'! Each full moon is also named, the roots of each name in the traditions of North American Native American tribes.

- The next full moon, the so-called '**Pink Moon**', will rise on 6 April, the 1st full moon of the 2023 spring season. Pink is associated with April's full moon because April is the time when flowers begin to bloom.
- May's full moon, the '**Flower Moon**', is on May 5th, the 2nd full moon of the spring season and the 2nd after the spring equinox of March 20th. There will also be a penumbral lunar eclipse, when the moon moves through the faint, outer part of Earth's shadow, the penumbra. This type of eclipse is not as dramatic as other types of lunar eclipses and may look like a regular full moon.
- June's full moon, the '**Strawberry Moon**', is on June 3rd, the 3rd full moon of the spring 2023 season.
- The July full moon, the '**Buck Moon**', will rise on July 3rd, the 1st full moon of the summer 2023 season and the 1st after the summer solstice.
- The '**Sturgeon Moon**' will rise on August 1st, the 2nd full moon of the summer 2023 season and one of two super moons in 2023, when the moon appears much larger as it rises. Also in August, there will be a '**Super Blue Moon**' on August 30th, the 2nd of the two super moons, and 'blue' because it's the 2nd full moon in a calendar month. The next Blue Moon is not until May 31st, 2026.
- The September full moon, the '**Harvest Moon**' or '**Full Corn Moon**', will be on September 29th, the 1st full moon of the Autumn 2023 season. With the autumn equinox occurring on September 23, this full moon is closer to it than the October full moon, so it is called the Harvest Moon. There will also be another penumbral lunar eclipse, 10 minutes before the full moon peak.
- October's full moon, the '**Hunter's Moon**', is on October 28, the 2nd full moon of autumn 2023.
- November's full moon, the '**Beaver Moon**', is on November 27, the 3rd full moon of autumn.
- The December full moon, the '**Cold Moon**', will be on December 26, the first full moon of the winter 2023-2024 season.



COULD YOU HELP HOUSE A HEDGEHOG?

[Help a Hedgehog Hospital](#), which has branches in Bussage and Brimscombe, are fundraising to upgrade their 15 year old wooden hutches (see below).



The proposed new hutches (bottom right) will be made of rubber (recycled from tyres), easier to clean, helping to keep parasites at bay.

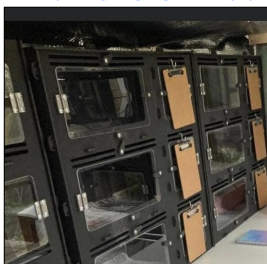
To replace all 10 hutches costs £2,000, so the hospital needs your help!

Could you sponsor a hutch? Sponsored hutches will be marked with a special tag to reflect your generosity. Or could you run a small fundraiser—maybe a table top sale or car boot sale? The charity would be very grateful.



You can also donate
HERE

www.helpahedgehog.org/donate.php



HILLTOP GARDENING CLUB HAPPENINGS...

The Hilltop Gardening Club's first evening meeting of 2023, at Eastcombe Village Hall, on March 7th, saw Margaret Wood, Membership Secretary & Treasurer, busy collecting fees and welcoming old and new members. Plant presentations and thanks were made to Ruth Fraser, who is standing down as Vice Chair after many years of supporting the club, and also to Janet Hendy, who prints the adverts for our meetings.

Julie Richie, our speaker from Hoo House Nursery, brought to the meeting thorough practical gardening experience, a practised aesthetic eye and plants for sale. Taking us through 'Colour Combinations,' Julie's vibrant, wide-ranging slides banished for an hour or so the impending snow and cold of March in favour of riotous, colour-filled reminders of earlier years.

While acknowledging colour choice is a question of taste, Julie's selection of planting schemes highlighted how hard it is to pull off some combinations. Armed with helpful plant lists, members were able to follow Julie's formidable knowledge and memory as we were drawn into careful observation. Playing to the strengths of Hoo House Nursery (unusual herbaceous perennials) we were presented with myriad possibilities through the gardener's year approach. Exemplars gleaned from across the country demonstrated how attention to detail and a passion for plants resulted in unusual juxtapositions that 'worked'. Form and colour combinations soon had members taking notes and looking forward to experimenting in the year ahead.

Along the way Julie added advice on plant viability and shared the difficulties of changing weather patterns. Optimism and experimentation were the order of the day as Julie's selections were drawn from enviable great gardens to colour combinations to try at home.

An enjoyable, informative first night for the Hilltop Gardening Club year.

Pam Meecham

Next meeting 4th April: Allotments: care and soils.
Spring, summer and autumn events are held at Eastcombe Village Hall from 7.15pm (coffee), with talks starting at 7.45pm.



ALLOTMENT TIME...

As the days lengthen, I start to think about our allotment, which we have had for four years. When we took it on, it was a patch of long grass, interspersed with fruit bushes and an apple tree. The raspberries were overrun with bindweed and grass. The paths between the beds had all but disappeared, and each time we visited, I nearly sprained my ankle.

But now! Well, it is still a little weedy, but the apple tree has been trimmed, the raspberries sit in rows and we pick them throughout the summer. The old, overgrown rhubarb has been moved, and is already sending out beautiful pink stalk and fresh green leaves. We also have blackberries, loganberries and Japanese wineberries, an interestingly sticky raspberry-like fruit, which taste of Jelly Tots. What a treat to be able to pick fruit from May through to October.

We like to major on fruit, but we still squeeze in some beans, courgettes, and sweetcorn, and sometimes, if we have room, some pink fir apples, which are in fact salad potatoes. In March, we were still picking the last of the brussel sprouts and purple sprouting broccoli, and starting to plan what to plant this year. Having been dug for many years, the soil on the allotment is beautiful - it is easy to turn, and with water troughs scattered all over the allotment site it isn't far to fill up the watering can.

Eastcombe allotments has just a few spaces available, some of which have fruit bushes and are ready to go. This is a great time of year to be taking on an allotment: you can cover up with 'weed control' fabric, then, as soon as the weather allows, take a fork and dig, ready for potato planting. Then, peruse the seed suppliers and pick your seeds - or do what I do (don't tell anyone) and pop to the Bisley farm shop and buy some of their amazing veg plants!

Tempted? Contact Robert (Eastcombe allotment warden) on 01453 886183 and come and have a look round.

Sue Wise



MOST BUMBLEBEE QUEENS NEST
JUST BELOW THE GROUND OR
UNDER PILES OF BRUSH IN WINTER



LEAVE THE LEAVES. BAN THE LEAF BLOWER.
IN THE SPRING, AVOID RAKING, TILLING AND
MOWING UNTIL THE QUEENS EMERGE FROM THEIR
WINTER NESTS IN MAY.

CAROL'S COOKERY CORNER: SPRING WRAPS

Wraps are healthy and quick to make, and use up any salad ingredients in your fridge. They are popular with young people - these recipes were given to me by my grandson, Sam.

CHICKEN WRAPS (enough for 2 wraps)

- 2 medium sized wraps (I used sweet potato wraps)
- 2 slices of cooked chicken, about 50g each, cut up
- A handful of washed lettuce leaves, torn into smaller pieces
- 12 black olives, halved
- 1/3 of a cucumber, cut into small chunks
- 5 small tomatoes, cut in half
- 1 tablespoon garlic or plain mayonnaise
- 1 tablespoon smoked barbecue sauce or plain tomato sauce
- Seasoning: salt and pepper

Mix the ingredients together in a bowl.

MASHED AVOCADO WRAPS (enough for 2 wraps)

- 2 medium sized wraps (I used wholegrain wraps)
- 1/2 a lemon: zest and juice
- 1 ripe avocado, peeled, stoned and mashed
- 1 thinly sliced yellow pepper
- 4 spring onions, finely sliced.
- 12 black olives, halved.
- 1 tablespoon mayonnaise
- 2 crushed garlic cloves
- Seasoning: salt and pepper

Mix the ingredients together in a bowl.

METHOD:

1. Heat the wraps for 10 seconds in a microwave.
2. Divide each mixture onto the middle of 2 open wraps in a V shape.
3. Bring the sides of the wrap together and seal by tucking them under the base.
4. Enjoy!



Chicken wrap is left, the mashed avocado wrap on the right

CHALFORD PARISH LOCAL HISTORY GROUP

Chalford Local History Group are holding one of their very popular slide shows on **Wednesday 19th April, 7.30pm**, at France Lynch Church Rooms.

Group members have been sorting through photographs collected by Stanley Gardiner, Lionel Padin and Mike Mills, generously entrusted to the group by Mike's family when he died. Spoilt for choice, they have nonetheless managed to select a wide variety of images from across time and all corners of the parish, including Bussage, Brownshill, France Lynch and the various levels of Chalford. Some images will be familiar, others less so: people working, celebrating, waiting for trains, football teams, casts of plays, aerial views, churches, shops—and lots more!

All are welcome at our meetings (including those stepping outside their parish boundaries!) **Admission:** Members £2 (annual membership is £5), non-members £3. **Questions?** Contact Camilla: camillaboon@hotmail.com

For details of recent talks, including on 'The Cotswold Way: 100 Miles of History' and 'Secret Cirencester', see the Chalford Local History Group website: www.chalfordparishlocalhistorygroup.org.uk/



EASTCOMBE CORONATION CELEBRATIONS:
SUNDAY 7TH MAY

Children's activities
 Hot Dogs!
 Soft Play!
 Join US
 Face Painting!
 Chalford Band
 Cakes!
 Morris Dancing
 Ice Cream
 Music
 Food, drink & fun!

A DAY IN THE LIFE OF... A NEIGHBOURHOOD WARDEN...

Hello, my name is Mark Dodd and after visiting Eastcombe, Bussage and Brownshill over the last few months in my job as Neighbourhood Warden, I would like to introduce myself to those I have not met yet.

My area includes Pitchcombe, Painswick, Cranham, Miserden, Bisley, Chalford, Bussage, Eastcombe, Brimscombe, Thrupp and all within that boundary. At the moment I am also covering a vacancy in Stroud town.

I aim to visit at least once a week, giving me time to research and help in any way I can, be it directly or by signposting enquiries to another department.

Full details of my work responsibilities can be found on the SDC website under [Community and Living](#). My main community support role includes helping with:

- Careline installation and faults
- Supporting vulnerable people
- Fly-tipping/flyposting
- Antisocial behaviour (covers a huge number of behaviours, including littering)
- Abandoned/untaxed vehicles
- Support of residents and partners

Should you need to contact me, my number is 07876 405833

or email mark.dodd@stroud.gov.uk



VILLAGE HISTORIES: LLOYD GEORGE'S SURVEY OF 1909: BUSSAGE...

The Lloyd George Survey of 1909 was undertaken to implement Prime Minister Lloyd George's 'People's Budget' of 1909. The PM had introduced old age pensions the previous year, and now he needed to provide the revenue to pay it, as well as for an ambitious naval building programme. All land was surveyed for taxation purposes, including agricultural land, allotments, and land with cottages or buildings on it.

The House of Lords initially rejected the Budget, but a year later it was passed and an army of surveyors set to work. Over the next 3-4 years, each land portion or 'hereditament' was surveyed and numbered on a map, with corresponding details of the property. At that time, few cottages were named, so it is necessary to study the maps and details carefully to identify properties, many of which still exist today.

Focusing on Bussage, here are just a few details from the properties surveyed. To research further, visit www.glos1909survey.org.uk/index.html

Hereditament 1735

Occupied by: Wall, Henry

Property owner: Eddles, Samuel

Type of property: Business

Details: inn, buildings and land,
Size: 1 acre 3 roods 10 perches,
Stone and tile house, unsealed
attics, 5 bedrooms, passage, tap
room, smoke room, bar, sitting
room, kitchen, pantry, beer cellar,
lean to scullery, stable for 10
horses with loft over. Garden.

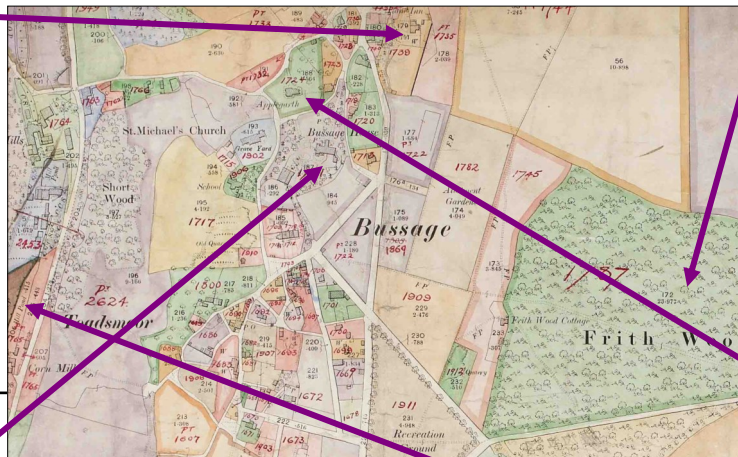
This is The Ram Inn.

Hereditament 1721:

Occupied by: Hunt, Warwick

Property owner: Sibree, Ernest, Manor Road, Redland, Bristol.

Description: 3 acres 1 rood 28 perches. Large stone built and slated house, 3 floor, originally containing about 14 rooms but inside practically removed at time of visit and workmen remodelling interior and renovating the outside at a probable cost of £1000. Large kitchen garden and pleasure grounds, the latter being rearranged, Stabling for 4, very large coach house, stall for 8 cows, very dilapidated, used as workshops for men, lofts over. Stone and slated cow house in field. Water from spring on other side of the road. Adjoins churchyard, but on higher ground. **This is Bussage House.**



Hereditament 1787:

Occupied by: Dorington, Sir J.E. (owner)

Details: Woodland, 23
acres 3 roods 38 perches
Comments: Beechwood
valued at £1128, best of
which was cut 3 years ago.
Purchased 1897 with
cottage & land £500.

This is Frith Wood.

Hereditament 1724:

Occupied by: Burgess, George Chesworth (owner)

Description: 1 acre 1 rood 5
perches, stone & slate house
with hall, 2 reception rooms,
kitchen, back kitchen, 4 bed-
rooms, attic, coal cellar, stone
& corrugated iron tool shed,
WC, small summer house,
stone & tile stable, carriage
house, coach house, nice
gardens, tap water.

This is Applegarth.

Hereditament 1962

Occupied by: Dorington, Sir J.E. (owner)

Description: pond

Size: 2 acres 3 roods 12
perches

Site Value: £30

Agricultural Value: £15

This is Toadsmoor Pond

Frithwood Surgery
Patient Participation Group

NEW
After walk refreshments now available

Need to lose weight?
Recovering from an illness?
Just need to get out and do some exercise?

PPG Health Walks
Recommencing on the
04/05/2023 and every alternate
Wednesday thereafter.

At **14:00** from Frithwood Surgery.

Flat 1.5 mile circuit.

If you are in need of exercise and company do come along. All welcome.

Registration forms at reception or sign up on the day

Pilates Classes

Stability • Mobility • Strength

Get moving, stretching and breathing

Eastcombe Village Hall
Tuesday 2-3pm starts 18th April

Frith Youth Centre
Thursday 9-10am

Payable in advance-reserve your spot on a course now, limited space

Suitable for Beginners-Intermediate

Private 1-2-1 sessions available, Pre and Post Natal qualified

Contact me:
michelle@pluspilates.net
find me at Plus Pilates
www.pluspilates.net

COULD YOU CONTRIBUTE TO THE NEXT NEWSLETTER?

- An upcoming event?
- An article on local history?
- Anything else local!

Please send contributions to:
eastcombenewsletter@btinternet.com
by noon on 20th APRIL.

THANK YOU!

NAME THAT VIEW!



How well do you know our villages?

March's photo was taken looking up at St Michael's Cottage, Old Bussage, from the path below.

April's photo is once again taken in or around the 3 villages.

Can you identify its location?

The answer will be revealed in the May issue.

WHAT'S ON in APRIL?

- 3 April:** EVG meeting, 7.45pm, Eastcombe Village Hall annex
- 4 April:** PPG Health Walk, 2pm, Frithwood Surgery/Hilltop Gardening Club meeting, 7.15pm, Eastcombe Village Hall
- 6 April:** Chalford PC meeting, 7pm
- 8 April:** The Lamb Inn Easter Egg Hunt, 2-4pm (see poster on front page)
- 9 April: EASTER SUNDAY**
- 16 April:** Hilltop Café Church, 2.30pm, Eastcombe Village Hall
- 19 April:** Chalford Local History Group Historical Slide Show, France Lynch Church Rooms, 7.30pm
- 20 APRIL (12 noon): DEADLINE FOR MAY NEWSLETTER**
- 29 April:** ChalCAN Early Bird Community Walk, 7.30am, CSSC