

February 2023

FOLLOW US ON FACEBOOK

60p
FREE Digitally!

Eastcombe, Bussage & Brownshill Newsletter

Welcome to the February issue of the newsletter.

To receive the newsletter **FREE** by email, please contact eastcombebambnews@gmail.com. You can also read it online at www.bisley-with-lypiatt.gov.uk/ and www.chalford-glos.gov.uk/Newsletters_34865.aspx.

Printed copies are available, 60p each, from **Eastcombe Stores, Eastcombe Post Office, Frith Community Café & Chalford Parish Centre**, as well as to customers of **Head First & The Lamb Inn**. Please send items for the March issue to eastcombenewsletter@btinternet.com **BY 20th FEBRUARY**.

NAUTICAL—AND
NICE!



If you came along to watch the second Fisherman's Friends film at Eastcombe's Screen on the Green in January, you would have been treated to a new element—entertainment in the interval, provided by the **local sea shanty group 'Third Cousin'**!

Third Cousin has been meeting to sing shanties together for the last two years - at first in the singers' gardens and more recently at The Lamb Inn, Eastcombe, where they gather most Wednesday afternoons during the winter months to sing an eclectic mix of songs from around the world, including, of course, traditional Cornish shanties.

The Fisherman's Friends started out singing on Port Isaac's slipway, The Platt, on a Friday evening before they became famous. Indeed, many fishing villages in Cornwall have a tradition of singing in pubs of an evening, with the whole pub joining in with the choruses. Shanty festivals are also very popular.



FANCY A GO?
Come along to The Lamb Inn, Eastcombe, at 4.30pm on a Wednesday and join in!

**SEE PAGE 6
FOR MORE
IDEAS OF
NEW THINGS
YOU CAN
TRY IN
2023!**



FLYING *the* FLAG on EASTCOMBE VILLAGE GREEN



Did you know that the flag is hoisted on official 'Flag Days'—including, recently, to mark the birthday of the Countess of Wessex on 20th January? Click [here](#) for more details of official Flag Days.

Support for the Ukrainian people is also constantly in mind and the Ukrainian flag is permanently on display.



FEBRUARY FOLKLORE...

The Anglo Saxons called February 'Sol-monath' (cake-month), when cakes were offered to the gods. It was also known as 'sprout-kale,' because it was when brassicas started to grow. With only 28 days in non-leap years, February is 'y mis bach' in Welsh - the little month. In Shakespeare's time, it was called 'Feverell', but a hundred years later it had become 'Februeer'. The modern name, February, is only about a hundred years old.



Ash Wednesday marks the start of Lent, forty days before Easter. The date varies each year according to the date of Easter - the earliest possible date is February 4th and the latest March 10th: in 2023, Ash Wednesday falls on February 22nd. It is traditionally a day of penitence to clean the soul before the Lenten fast, when ash, made from last year's Palm Sunday crosses, is mixed with holy water to make a greyish paste. The priest dips a thumb in the paste and makes a cross on each person's forehead. The previous year's Palm Crosses are used because Palm Sunday celebrates Jesus' triumphant entry into Jerusalem, so when the crosses are converted to ashes, worshippers are reminded how defeat and crucifixion swiftly followed triumph.

With Lent being a time of quietness and fasting, Shrove Tuesday, the day before Lent begins and sometimes called Mischief Day, is traditionally a day for fun and food. In some towns a variation of football is played. It has few rules, but, with traffic stopped, people gather in the street and, on the ringing of the church bell, a ball is thrown into the crowd. Skipping and pancake racing are also traditional Shrove Tuesday activities.



Collop Monday is the day before Shrove Tuesday and traditionally when large pieces of fried meat are eaten, while, on Shrove Tuesday, pancakes are made to use up ingredients before the fasting of Lent. But there are variations: in Scotland, broth might be made, in Hertfordshire - doughnuts, while 'frying pan pudding' is eaten in Lincolnshire and pea soup in Cornwall.



There are also non-religious Ash Wednesday traditions: a playground game involves carrying a piece of twig from an ash tree in your pocket or down your sock. Anyone without an ash twig has his or her feet trodden on!

BISLEY-WITH-LYPIATT PARISH COUNCIL NEWS: FEBRUARY 2023

<https://bisley-with-lypiatt.gov.uk/>

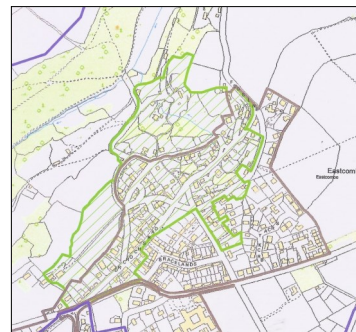
Happy New Year to you all from everyone on the Parish Council.

Precept: We have agreed that the Parish Precept will remain the same for the next financial year, April '23–March '24. This means that when SDC issue the Council Tax statements for this year, the amount you pay to the Parish will not change.

Snow and Grit Bins: The recent bad weather in December showed how the village can come together and make sure that access is kept open and safe. The Eastcombe Snow Group were excellent. However it must be noted that there is no guarantee that GCC will replenish the stocks of grit before the end of the winter, so if there is another cold snap, please use the grit sparingly. A little goes a long way.

Platinum Jubilee Oak Tree: As you may have noticed, the oak tree planted to commemorate the Platinum Jubilee appears to have died. Many thanks to Rob Atwood who has supplied and planted a replacement. Hopefully this one will fare better.

Eastcombe Conservation Area: The Conservation Area covers a large part of Eastcombe, with the boundary shown in green on the map right. At the PC meeting in December it was debated whether information signs denoting the Conservation Area should be installed to make people aware. As the council could not reach a definitive decision, it was decided to canvass local residents. If you have any views, please contact Jenny Exley or any other Eastcombe Ward councillor. Contact details are on the Bisley-with-Lypiatt Parish Council website.



Eastcombe Allotments: Over the past year there has been an increase in damage by deer to vegetable and fruit crops grown by tenants. Most of the damage is caused by overnight incursions, but recently a tenant witnessed three deer in the middle of the day. Typical damage is spinach, chard and beetroot eaten to ground level and runner beans stripped of leaves as far up the stems as the deer can reach. There have also been instances of sweetcorn and marrows being eaten. In addition, droppings scattered among crops are contaminating strawberries, lettuce, radishes, and spring onions. This problem was discussed at length during our January meeting, but there is no straightforward solution. This issue is also a problem at the Parish Allotment site in Oakridge. It was decided to set up a small working group with representatives from the 3 wards, plus Allotment Wardens, to investigate how best to deal with this issue. If you have any views or suggestions then please contact Emma Hammond – contact details on the website.

Land at Middle Hill: A preliminary Tree Preservation Order (TPO) has been granted by SDC, covering trees on the land at Middle Hill adjacent to Fourways. Although some trees have already been felled, this TPO should stop any further work for at least the next 6 months.

Neighbourhood Warden: A reminder that local concerns, including anti-social behaviour, can be reported to our Neighbourhood Warden, Mark Dodd: mark.dodd@stroud.gov.uk or 07876 405833.

Next Meeting: The next meeting will be held at Bisley Village Hall on **Wednesday February 1st at 7.30pm**. All are welcome to attend.

CHRISTMAS TREECYCLING RAISES THOUSANDS OF POUNDS FOR LONGFIELD

Between 8th and 10th January 2023, an army of volunteers covered an incredible amount of postcodes across GL6 to collect almost 3,000 Christmas trees registered for the Christmas tree recycling scheme.



Longfield would like to thank everyone who made a donation—as well as the brilliant army of individuals, companies and community groups who gave up their time to help.

Your donations will help patients, their families and carers when a devastating diagnosis changes everything.

The trees have been chipped and the chippings used locally, an environmentally friendly scheme that also supports Longfield's free hospice care.

**THANK YOU – YOUR DONATIONS
MAKE A REAL DIFFERENCE.**



THE JOHN TAYLOR'S FOUNDATION

The John Taylor's Foundation is a local charity offering small grants to students going on to Higher Education (excluding A levels) or those undertaking apprenticeships, to assist with the cost of books, tools or equipment.

If you are aged under 25 and live in the Ancient Parish of Bisley (the civil parish of Bisley-with-Lypiatt, most of Bussage and part of Chalford), please apply in writing to The Trustees, at jennytaylor1944@outlook.com stating your full name, age, address, university course or employer.



FRITHWOOD SURGERY HEALTH WALKS

Frithwood Surgery health walks will resume on 5th April 2023, and on alternate Wednesdays thereafter, starting at 2pm from Frithwood Surgery.

The route is 1.5 miles long and mainly flat, designed for anyone in need of exercise—whether to help recovery from an illness, for weight loss or a need to exercise in the company of others.

All are welcome, and there will be after-walk refreshments.



'GO GREENER!'

Recycle your unwanted items by offering them on [Freecycle](https://www.freecycle.org/home/) (www.freecycle.org/home/)

Your trash could be someone else's treasure!

**Bisley, Eastcombe &
Oakridge Climate Action Network**



CHALFORD PARISH COUNCIL: FEBRUARY 2023

01453 887204; info@chalford-glos.gov.uk www.chalford-glos.gov.uk. [Facebook](#).



SNOW - The heavy snow fall before Christmas led to a number of requests for grit bins. Gloucestershire County Council Highways has to authorise the installation of the bins and there are criteria to be met, one being that it needs to be close to the highway for practical purposes, and funding is down to the Parish Council. Out of 7 requests, 4 were authorised.

A reminder of what we have at the Parish Centre: book swap, Terracycle, bus timetables and many useful leaflets. Thanks to the generosity of residents, we also have a **Food Bank** in the foyer (donations of food are always welcome). In addition we have 'Barry', our Freezer of Love, stocked with meals made by the Long Table. Please come in and help yourself.

'Return to War': Compiled by a group of Chalford writers, this book is on sale at the Centre, £10 per copy.

Eleven Short Walks Around Chalford Parish: to help you with your new year resolution to get fitter, why not get a copy of this book from the Parish Centre? £2 per copy.

Brownhill and Bussage Heritage Trail booklet, published by Chalford Parish Local History Group, providing really interesting facts about the area. £2 per copy.

Weekly, Highways provide us with a list of **roadworks** in the county and from this we compile a list of works in our area: this is on our website and is also emailed to residents who have signed up to receive emails. If you would like to be added to the list to receive news affecting Chalford, please contact us.

We are acutely aware of the condition of road surfaces in some parts of the parish, particularly **pot holes** that have worsened as a result of the poor weather. We are talking to Highways about this issue.

Public Rights of Way in Frith Wood: It's been a while since Robert Hitchins agreed to new Public Rights of Way in Frith Wood. It's not at all clear where two of those widely used by dog-walkers actually go on the ground, and this has been made worse by the recent tree felling. Over the next few months the Footpath Volunteers, Friends of Frith Wood and Robert Hitchins will be working to remedy this and help you keep to the paths and avoid trampling wild plants.

Our **next meeting will be at the Parish Centre on Thursday, 2 February 2023 at 7pm.** Please contact the Clerk to let her know if you would like to attend, particularly if you wish to speak, so that she can make time for your issue on the agenda.

BUSSAGE PRIMARY SCHOOL

CHRISTMAS AT BUSSAGE PRIMARY:

Our **Community Carols** event was incredibly well attended by both the school community and many locals. It was a lovely event to bring us all together prior to Christmas, run by Alisdair Longwill and Revd Sue Murray.

KS1 performed a twist on the traditional **Nativity** with the play, '*Christmas With The Aliens*'. It was our first large production at Christmas time since Covid procedures, and lovely to welcome parents back into school. Similarly, two KS2 Carol Services were held for the junior children, where there were beautiful Christmas songs and readings shared, as well as traditional carols. Again, it was wonderful to welcome parents to these for the first time in a few years.

A Pantomime Trip: On Friday 6th January, the entire school ventured to Cheltenham to see the Everyman's '*Dick Whittington and His Cat Tweedy*' - a lovely post-Christmas treat! The children LOVED it and thought it was very funny. It was a great opportunity to see a professional production and marvel at the music, costumes, singing and dancing. The event was subsidised by our fabulous school PTA.

This Term: This term, three junior classes are receiving expert tuition in music: Class 3 are embarking on 10 weeks of recorder teaching, class 4 on 10 weeks of clarinet teaching and class 5 on 10 weeks of music technology with iPads using Garage Band. Again, all of this is paid for by our PTA! We aspire to make all our children love music by the time they leave Bussage, as well as viewing themselves as musicians.

Severn Trent Water came in to do a whole school assembly on Hydration and use of plastics, followed by KS2 workshops with each Junior class. This feeds into and supports our schools 'Eco' nature and thinking.

DISTRICT COUNCIL NOTES: FEB 2023:

Affordable Housing: In 2021/22 the council had its best year of affordable housing completions – 245, double the average in recent years. These are mostly with housing association partners and involve different tenures, including social rent, affordable rent and shared ownership. SDC is the only Gloucestershire local authority which owns and manages its own council housing - more than 5,000 homes.

Warm Welcome: The council is supporting more than 40 'warm spaces' around the district, including in Bisley and at The Lamb in Eastcombe: Share warmth, company and refreshments, free of charge, at the pub every Tuesday and Thursday 2-5pm. Huge thanks to landlady, Sarah!

Cost of Living: For advice on money, energy and water, food, family and childcare, mental health support and warm spaces see www.stroud.gov.uk/costofliving.

Recycling: See the **Waste Wizard** on the SDC website for what/where to recycle. Terracycle also take tricky items like toothpaste tubes and crisp packets - collection points include Bisley's Greenshop.

The 3 levels of local government – County, District and Parish – have different responsibilities. Here's a quick guide to the main responsibilities of each:

Gloucestershire County Council: Adult Social Care; Children & Young People's Services; Highways & Footpaths (PRoWs); Recycling Centres; Libraries; Education; Fire Service & Police

Stroud District Council: Animal Welfare; Anti-social Behaviour (fly-tipping, dog-fouling, littering, noise, graffiti, abandoned vehicles); Business Rates; Council Housing; Council Tax; Elections & Voting; Environmental Health; Food Safety; Housing; Licensing; Planning; Pest Control; Street Cleaning; Waste & Recycling Collection

Parish Council: Allotments; Playing Fields/Play Areas; Churchyards; Planning; Grants to Local Organisations.

To contact: see websites or call: Parish: 01452 771089; District: 01453 766321 (out of hours 01453 222104).

As always, please contact me if I can help in any way.

Martin Brown, Green Party District Councillor
01452 770878 & cllr.martin.brown@stroud.gov.uk

Eastcombe Baptist Church

A service is held every Sunday morning at 10:30am at the church in Dr Crouch's Road, Eastcombe.

EASTCOMBE VILLAGE GROUP

Upcoming meetings will be discussing initial ideas for the Eastcombe Coronation celebrations on Saturday 6th May, and other plans for the year. If you have ideas, please come along, or let me know.



The **Eastcombe Christmas tree** was appreciated by many, and it looked especially festive when the snow fell. We raised over £62 for The Long Table from the sale of decorations. Many thanks to everyone who donated to this local charity.

The **Village Quiz** will take place on **Saturday 11th February at 7.30pm, at Eastcombe Village Hall**. A ploughman's buffet is included in the ticket price, but **please bring your own drinks AND GLASSES**. Tickets cost £7 each from Eastcombe Stores, and teams can have up to 6 members. Thank you to Scott and Chris Sissons for organising the quiz and to Helen and Bob Watkinson for organising the food.

Later in the year we are planning:

- Events for families with young children, so that they can meet each other
- The annual **Wine Walk on Sunday 30th July**. If you can help this year, please do let me know.

We are also looking for someone to help with our meetings by making notes and helping to follow up on action points. If you would like to help, please let me know.

Peter Scott
peterhscott@btinternet.com

THANKS FOR THE TREE!

Christmas is over and the decorations put away, but here's a heartfelt thank you to everyone who helped put the Christmas tree on Eastcombe Green. It was a beauty!

Gill Calvert



St Michael's & All Angels, Bussage

Visitors are always welcome at our services. Services for this month are:

February 12th: Holy Communion at 9.30am

February 19th: Morning Prayer* at 9.30am

February 19th: Hilltop Café Church at 2.30pm (at Eastcombe Village Hall) - see poster

*Morning Prayer is a simpler and shorter service

On the other Sundays there are services in different parts of the Benefice. For full details

visit www.bisleybenefice.org.uk or sign up to our mailing list: pewslipsbisley@hotmail.com

For weddings, funerals & baptisms, contact Revd Sue Murray: vicar@bisleybenefice.org.uk

HILLTOP CAFÉ CHURCH

Hilltop Café Church takes place **EVERY 3rd SUNDAY of the month, 2.30–4pm** at Eastcombe Village Hall.

About 30–40 people come along, including families and young children.



Tables are set out in a 'café-style', with a warm welcome, tea/coffee and delicious cakes and biscuits!

Children have an activity table, while the adults sing a few songs/hymns, listen to a short talk and have a chance to reflect on points from the talk with those on their table.

If you would like to come along and see if this sort of gathering is for you, the next Café Church is Sunday 19th February, at 2.30pm at Eastcombe Village Hall.

Future dates are: 19th March (Mothering Sunday) and 16th April.

For more details, contact David:
davidrhodes51@gmail.com



CHALCAN UPDATE: FEBRUARY 2023

We would love to re-launch our **Food and Waste Group**. If you are interested in joining or to find out more then please get in touch.

Free energy surveys are still on offer! Please get in touch to see how we can help.

Biodiversity Action planted 3 Rowan trees in Bussage in January, enhancing the area for wildlife.

Bike racks! We have some funding to install bike racks! Do you know of a location where these would be useful? If so, please let us know!

Stroud Potato Day: Saturday 4 February at Stroud Farmer's Market, 8.30am to 2pm. Come along to Down to Earth and Transition Stroud's annual spud sale—buy 3kg or just one tuber.

Access Bike Project Monthly Bike Ride: Brimscombe to Stroud: Saturday 4 February. Meet 10am at The Long Table (Brimscot Mill) for a chat and a drink. Leave 10.30am to ride along the A419 to Stroud.

Food for Wildlife Workshop: Sunday February 5th from 9.30–3pm

Learn how to share all or part of your garden with wildlife. Held at the Pavilion in Cainscross, Stroud. Donation of £10 to help with costs. Details and booking at <https://tinyurl.com/3tp6zsec>

ChalCAN's community walks have resumed: the next dates are **February 18th and March 18th**. We meet at Chalford Sports and Social Club at 10am. All welcome!

Transition Stroud supports local **Repair Cafes** including in **Stroud**: last Saturday of the month (**25th Feb**) in Trinity Rooms, Field Road. Information at atelierstroud.co.uk/repair-cafe

Pre-loved Clothes Sale: Sunday February 26th, 11am–4pm, Stroud Brewery: Grab a bargain!

Dry Stone Walling Taster: Saturday 25th & Sunday 26th March, 10am–3pm: A 2-day session at a beautiful site on Rodborough Common. Book at stroudvalleysproject.org/events

Contact Kate: info@chalcan.org.uk

ChalCAN

EASTCOMBE WI

A reduced number of members risked a very cold night for our first meeting of 2023, and were welcomed by our President. The business part of our evening was dealt with, and refreshments served.



We were then entertained by a fascinating talk on Chatsworth and the Cavendish Family 1530-1830. "A little history, a little architecture and a large dollop of scandal" as our speaker, Gillian White, introduced it.

Alongside pictures of the Baroque house and the magnificent gardens, the family history was told, from William Cavendish buying the estate for £600 to the 6th Earl, a bachelor who died in 1858. Their rise through the aristocratic ranks was revealed, through friendships and enmities with Royalty, amassing wealth through political influence. Scandals were rife, from embezzling money from Henry VIII, to family feuds, a *ménage à trois* and illicit relationships.

Told with gusto, the tale was met with warm applause, and Gillian was thanked by Carol.

As a group we regularly enjoy outings, luncheon club and participate in craft, book club and scrabble meetings. New members are always very welcome.

Meetings, most of which most are open to non-members for a small fee, take place on the 3rd Tuesday of every month at 7.15pm at Eastcombe Village Hall, and usually include some form of entertainment. We look forward to warmly welcoming you.

For more information please contact the Secretary, Glenys Sharpe, on 01453 886298

SCREEN ON THE GREEN

presents

OPERATION MINCEMEAT

Venue: Eastcombe Village Hall

Date: Saturday 18th February

Time: Doors open 7pm, film starts 7.30pm

It's 1943 & the Allies are determined to break Hitler's grip on occupied Europe. But how to protect an invasion force from potential massacre?

It falls to two remarkable intelligence officers, Ewen Montagu (Colin Firth) and Charles Cholmondeley

(Matthew Macfadyen) to dream up the most improbable

strategy of the war, centred on the most unlikely of secret agents: a dead man.

Operation Mincemeat is the extraordinary and true story of an idea that hoped to alter the course of the war.

Admission: £4 per person

Selection of Ice Creams £2 each

All welcome!



WINTER VISITORS—WILDLIFE TO WATCH!

Winter may be cold, but it's still a great time to see wildlife. Some birds fly hundreds of miles to visit us for the winter, while resident birds are more noticeable because the quest for food makes them easier to spot. Brighten your winter days with a spot of bird spotting!



Fieldfare (*Turdus pilaris*)

Part of the thrush family, fieldfares have a grey head & tail, with brown across the wings & back, & orange on the throat and chest. Their flanks are pale and spotted and their underwing white during flight. You may see them chattering in large groups, along with redwings.



Redwing (*Turdus iliacus*)

Also a member of the thrush family, from Europe & Asia, the redwing has red patches on the wing, a brown head with pale stripes around the eye & a pale mottled front. Like fieldfares, redwings are often seen in flocks & you may see the two species together.



Waxwing (*Bombycilla garrulus*)

Distinctive with silky grey pink plumage, a crest & a reedy call. Starling-sized, it has a black bib, a black eye mask resembling eyeliner flicks & wing & tail tip are black with yellow highlights. From Scandinavia & Siberia, they like berries & visit when the crop in normal wintering grounds is low.



Siskin (*Carduelis spinus*)

A small, lively finch with a distinctly forked tail & long narrow bill. Males have a streaky yellow-green body & black crown and bib, with yellow patches on wings & tail. Many are resident in the UK, but, in winter, more may arrive from Europe.



Blackcap (*Sylvia atricapilla*)

A distinctive greyish warbler, the male has a black cap & the female a chestnut one. Its fluting song has earned it the name 'northern nightingale'. Primarily a summer visitor from Germany & north-east Europe, blackcaps are increasingly spending the winter in the UK.



Snow Bunting (*Plectrophenax nivalis*)

Large buntings with striking snowy all-white heads and underparts, contrasting with a black mantle & black wing tips. In autumn & winter, birds develop a sandy wash to their plumage & males have more mottled upper parts.

Pilates classes Can't see a class that suits you? Let me know and I'll see what I can do.

- Group classes (Minchinhampton, Bussage and Rodborough)
- 1-2-1 in your home
- Online classes
- Seated and Standing
- Pure stretch
- All equipment provided
- Beginner to intermediate
- Pre and Post Natal

Contact me for details
michelle@pluspilates.net
Check out the website for more information
www.pluspilates.net
Or give me a call
07725 329506

PlusPilates
Stability • Mobility • Strength
purestretch
Instructor

Can't see a class that suits you? Let me know and I'll see what I can do.

COULD YOU BE A SCHOOL GOVERNOR?



Eastcombe Primary School, at the heart of Eastcombe and bringer of Gnome Hunts, Summer Fetes and Christmas tree sing songs, is looking for a new community school Governor.

Governors meet with the school management 4-6 times a year to ensure the school is delivering great education to the next generation of Eastcombers!

All applications welcome (including if you have time constraints) Please email Mike Reynolds, parent-gov3@eastcombe.gloucs.sch.uk to find out more.

NEW YEAR, NEW VOLUNTEERING ROLE?

Do you remember being a Brownie or a Guide? Remember the fun you had, and the leaders who helped you? Would you like to be part of that again? We are looking for volunteers to help with Girlguiding at Eastcombe Scout and Guide Hall.



Our Rainbows, Brownies, Guides and Rangers enjoy a wide-range of activities from fire-lighting and cooking to challenge badges and sleep-overs. Whether you can help at meetings, or take on the role of treasurer/admin for a unit, we will work with you to find a role to suit you.

If you are 18 or over, have a few hours to spare and are looking for a rewarding role, please get in touch with Sarah Dalby:

bisley@girlguidingglos.org.uk

Alternatively or register your interest at www.girlguiding.org.uk, linking your request to Bisley District.

TRY SOMETHING NEW IN 2023!

A new year is a great time to try something different: a new hobby, getting out more, joining an exercise class or volunteering with a local charity or organisation. Here are just a few of the opportunities available locally...

**LIFE HAS NO REMOTE.
GET UP
AND CHANGE
IT YOURSELF.**

GET ARTISTIC: Join a painting course in Oakridge with [John Bailey](#), or try one of the arts and crafts courses and workshops at [Victoria Works Studio](#) in Chalford, where you're sure of a friendly welcome and small groups, inclusive of all abilities—activities range from stained glass to basket weaving, and much more. [Pegasus Art](#), at Griffin Mill, London Road, Thrupp GL52AZ also offer a range of art courses, or, if you prefer, you can paint while you drink at a Stroud Brewery's [Paint and Sip Party](#)! If you fancy trying your hand at making jewellery, [Julie's Angel Jewellery](#) offers crystal gemstone jewellery making workshops for 10-12 people at a time.

FIND YOUR VOICE: We are lucky to have several choirs and singing groups locally, including the [Thameshead Singers](#), a friendly and sociable chamber choir of about 30 singers who are 'serious about enjoying singing.' They have a broad repertoire, from renaissance to 21st century compositions, perform 3 concerts a year and at least one cathedral visit (where they sing the service), and perform at weddings and other special occasions. Or you could try some traditional shanty singing with 'Third Cousin,' an Eastcombe based shanty singing group—see front page for more details. Oakridge Choir are a fun singing group for all abilities, who meet at Oakridge Village Hall, 11am-12.30pm on Mondays—for more information contact Bidy on 07814 652735 or email oakridgevillagechoir@gmail.com. [Sing your Heart Out Stroud](#) is a community choir which meets in Stroud on a Wednesday night in term time, between 7.30pm and 9pm. Finally, [The Stuart Singers](#) are a group of about 50 singers (men and women) who enjoy making music while raising money for local charities. They rehearse every Thursday at Minchinhampton Primary School, performing around 12 concerts a year, both locally and further afield.



GET ACTIVE: If you fancy taking more exercise this year, [Pilates](#) is a good place to start. Classes take place at Frith Youth Centre on Thursday 9-10am—contact michelle@pluspilates.net for more information. Alternatively, [Chalford Tennis Club](#) offers the opportunity to participate in all kinds of tennis and runs a Junior Programme on floodlit all-weather tennis courts, while [Chalford Sports & Social Club](#) offers a range of active and crafty opportunities, including Short Mat Bowls, Skittles, TLC (Tuesday lunch club), Make it Group (an informal craft club on Wednesday mornings 10am-12.30pm) and [BeFit](#). Alternatively, kick up your heels and try cheerleading with [LCS Cheerleading](#) at Brimscombe Primary School, a fun and welcoming group for all ages and abilities!

TIME TO GIVE? Last but not least, how about volunteering with a local group or charity in 2023? Eastcombe Footpath Group (contact Scott on 07547 48592), [Chalford Footpath Group](#), [Eastcombe Brownies and Guides](#) (see above), [Stroud Food Bank](#), [The Long Table](#) and the [Canals Trust Bookshop](#) are all run by volunteers - contact them individually to find out more about their volunteering opportunities. Could you occasionally help to sort recycling for the benefit of local schools and community groups? If so, [Tricia Watson](#) would be delighted to hear from you! Fancy helping to look after Frith Wood? See the [Friends of Frith Wood Facebook page](#) for volunteering opportunities in the wood. Or, if you fancy working with families and young people, [Eastcombe Primary School](#) is seeking governors to join their team (see above), and [The Door](#) in Stroud is looking for volunteer mentors to help young people turn their lives around—full training and support is provided and the next set of training starts on 2nd February.



If you run a local group, did you know that the Lamb Inn, in Eastcombe may be able to host your sessions, especially during the day time? Meet in a warm, welcoming space and make use of your community pub!

Contact info@thelambinneastcombe.co.uk or call 01452 770223 for more information.

CAROL'S COOKERY CORNER:

PARMESAN BISCUITS & MACKEREL PATE

Good to serve with drinks or before a main meal as a starter. Top with sliced olives or preserved tomatoes.

PARMESAN BISCUITS

(makes 25)

INGREDIENTS:

200g finely grated Parmesan cheese
200g softened butter
200g plain flour
2 sprigs fresh rosemary
2 sprigs fresh parsley to decorate

METHOD:

1. Heat the oven to 200 degrees C/180 degrees fan oven/gas mark 7.
2. Blitz the Parmesan, butter, flour and the rosemary in a food processor until the mix comes together to form a dough.
3. Roll out the dough until the thickness of a £1 coin, then cut into 5cm rounds using a 5cm cookie cutter.
4. Spread the biscuits onto a greased baking tray and top each with a parsley leaf. Bake for 14 minutes until golden. Leave to cool a little, but lift off the tray whilst still warm.



MACKEREL PATE

INGREDIENTS:

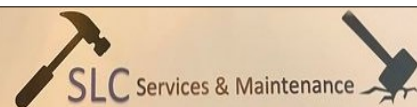
250g smoked mackerel fillets
2 teaspoons lemon juice
2 teaspoons horseradish sauce
1 tablespoon mayonnaise
1 tablespoon Greek yogurt
Salt and pepper

METHOD:

1. Remove skin and any bones from the mackerel fillets.
2. Blitz all ingredients in a food processor until a smooth paste.

Enjoy!

KEEP IT LOCAL!
Need a hand? Give Sam a call!



• All Aspects of Garden Maintenance
• Hedge Cutting • Pressure Washing • Fascia Cleaning
• General DIY • Fencing • Home & Garden Clearance
• Furniture Collections • Small House Removals

Fully Insured - with Waste Carriers Licence

No Job too Big or too Small Give us a Call

Contact Sam Coates: 07825 449 694

email: slc132@hotmail.com

If you run a local business or organisation and would like a (free) mention in the newsletter one month, get in touch:

[EMAIL THE NEWSLETTER](#)

ARE YOU INTERESTED IN LOCAL HISTORY?

Have you joined the local history group for Eastcombe & Bismore, on Facebook?

Search for:

Eastcombe & Bismore Local History Group
& answer the quick question.

All members are welcome to post photos or information, or to ask questions. You don't have to live in Eastcombe or Bismore to join.



Eastcombe Post Office c.1910-18. Eastcombe Green
Data Antill, postmistress c.1914, stands by the gate. The Post Office moved several times over the decades, also operating from Church House in Dr Crouch's Road, Beam Ends in Wells Road and a bungalow in Chancwell.

DROP IN *at the* LAMB INN!

Feeling chilly? Fancy some company? You'll find a warm welcome at The Lamb Inn **every day** (not just Tuesdays & Thursday afternoons, & Wednesday mornings)
- pop in for a drink or hot soup.
Pay as you feel (or not at all)
- all welcome.

**You can now also watch
Sky Sports & BT Sport
at the Lamb!**



**'WARM
WELCOME'**
at The Lamb Inn

Join us to share warmth, company and free refreshments

Every Tuesday & Thursday 2-5pm

(starting Tuesday 1st November)

ALL WELCOME!

Don't forget: you are also welcome to join us at the Community Coffee Morning, 11am every Wednesday at The Lamb Inn - coffee, tea and drinks on sale.

A DAY IN THE LIFE OF... A COTSWOLD WARDEN:

I joined the Cotswold Voluntary Wardens 12 years ago, after a chance meeting with members at a local village show several years earlier, when I decided that it would be what I would do 'when I retired'. I've never regretted that decision!

Central District (one of the five districts which cover the AONB of the Cotswolds) stretches roughly from Cleeve Hill to the Golden Valley and from Painswick to Fairford - a large area to service, and to assist in improving accessibility to the countryside.

I am part of the Parish Warden network, which keeps an eye on the state of local public rights of way. If a path is overgrown or a small tree has blown down across it I can usually deal with this - sometimes with the help of my 'involuntary warden' husband and a bow saw. However, if something needs the 'heavy mob', I have to call on a work party, who will come out with brush cutters and chainsaws.

As we have only 2 work parties a week, it can take some time before work gets done and we are, of course, always dependent on the weather!

As well as clearing paths, work parties install gates and bridges and mend stiles, as well as hedge laying, dry stone walling and tree planting. Much of this work is for conservation charities.

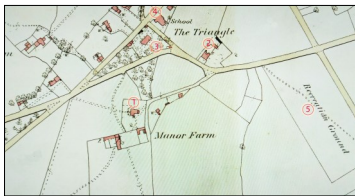
We also run a year round programme of guided walks, which are free and you don't have to book in advance. A full list can be found on the AONB [website](#).



Attaching a non-slip surface to a bridge

Helen Watkinson

VILLAGE HISTORIES: THE BUILDING of the MANOR FARM ESTATE, BUSSAGE



The Manor Farm estate in Bussage is so-called because it was built on the fields of Manor Farm, which once covered a large part of the hilltop. Created by Sir John Dorington of Lypiatt Park in 1869-70 by enclosing part of the ancient common land of Bisley Common, the farmhouse and buildings cost £600 to construct.

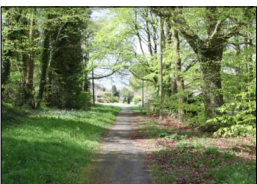
Bussage, of course was in existence well before this date, based around The Ridge and Cowswell Lane; what we now call 'Old Bussage' is first mentioned in 1304.

There is also evidence of much earlier occupation of the hilltop, with a large number of flints discovered, amongst them arrow heads.

The auction of 1919 saw Manor Farm sold off with the rest of the Lypiatt estate:

Lot 68: 'A useful Mixed Agricultural Holding... including Stone-Built Farm House... Box Room, four Bedrooms, Sitting Room, Kitchen, Larder, Pantry, Cellar, Coal Store, Garden. Water Pump, three-bay Waggon Lodge, Enclosed Yard, Piggery, four Calf Houses, Barn... two Hovels... Cow House for five... two Loose Boxes...'

The farm land amounted to more than 78 acres in total, and, together with Lot 69 (a Parcel of Accommodation Arable Land and Small Piece of Woodland convenient for Bisley and Chalford Villages), covered the area surrounding the farmhouse, the copse opposite The Triangle, fields now covered by housing and all the land between The Ram Inn, Frith Wood and Fourways crossroads.



The old road to Bussage

Before the estate was built, long-time residents remember that the old road which linked Eastcombe and Bussage led roughly in a straight line from Dr Crouch's Road, across The Vatch and along The Ridge (this still exists as a footpath). Opposite the entrance to Dr Crouch's Road were open fields, accessed by a stile.

The idea of building on Manor Farm's land was mooted as far back as the late 1940s, with permission granted in 1955 and 1965.

Building commenced in the early 1970s, but the bulk of the development didn't take place until the 1980s.

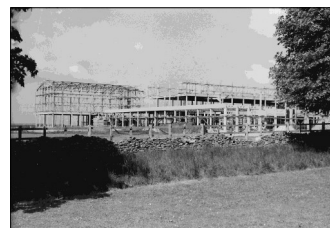
There were several changes to the plans over the years - early drafts show a nursery, which never materialised. In 1962, a new school was built, Manor School, re-named Thomas Keble in the early 1990s.

The development was not without problems: there was considerable local opposition to the plans, one of the first developers went out of business, and a huge sinkhole appeared one night beneath what is now the Thomas Keble School gym, so large that a truck fell into it—it was never recovered and is still underneath. A similar sinkhole found beneath what is now housing also proved difficult to fill and had to be capped.


Today, Manor Farmhouse is all that remains of the farm, standing on Manor Lane, near Thomas Keble School.



The partially-built Manor Estate in the early 1980s. Tanglewood Way appears to stop near Frith Wood (upper right) & the shops & Frithwood Surgery are yet to be built



Manor School under construction, 1962



Fun Quiz Night In Eastcombe

11th February 2023
Eastcombe Village Hall
7.30pm

£7 Per Person for teams up to 6 including a Ploughman's Buffet (Bring your own drinks)

Tickets available at Eastcombe Stores



Erin's Wish

Raising awareness of SUDEP

Birthday Race Night

Saturday 4th February 2023

Eastcombe Village Hall

7.30pm start

BYO Nibbles and Alcohol



COULD YOU CONTRIBUTE TO THE NEXT NEWSLETTER?

- An article on local history?
- An upcoming event?
- Anything else local!

Please send contributions to:
eastcombenewsletter@btinternet.com
by noon on 20th February.

NAME THAT VIEW! How well do you know our villages?



January's historical photo showed the 1974 construction of what we now know as the Bussage turn, leading to The Ridgeway (see above).

February's snowy photo is once again taken in or around the 3 villages.

Can you identify its location?

The answer will be revealed in the March issue.

WHAT'S ON in FEBRUARY?

- 1 Feb:** Bisley-with-Lypiatt PC meeting, 7.30pm, Bisley Village Hall
- 2 Feb:** Chalford PC meeting, 7pm, Chalford Parish Centre
- 4 Feb:** Birthday Race Night for Erin's Wish, Eastcombe Village Hall, 7.30pm/Stroud Potato Day, Stroud Farmer's Market, 8.30am -2pm/Access Bike Project Bike Ride, 10am, The Long Table, Brimscombe Mill
- 5 Feb:** Food for Wildlife Workshop, The Pavilion, Caincross, Stroud, 9.30-3pm
- 11 Feb:** Eastcombe Quiz Night, Eastcombe Village Hall, 7.30pm
- 18 Feb:** Screen on the Green, 7pm (7.30pm), Eastcombe Village Hall/ChalCAN Community Walk, 10am, CSSC
- 19 Feb:** Hilltop Café Church, 2.30pm, Eastcombe Village Hall
- 20 Feb:** Deadline for March newsletter
- 25 Feb:** Repair Café, Trinity Rooms, Stroud
- 26 Feb:** Pre-loved Clothes Sale, Stroud Brewery, 11am-4pm